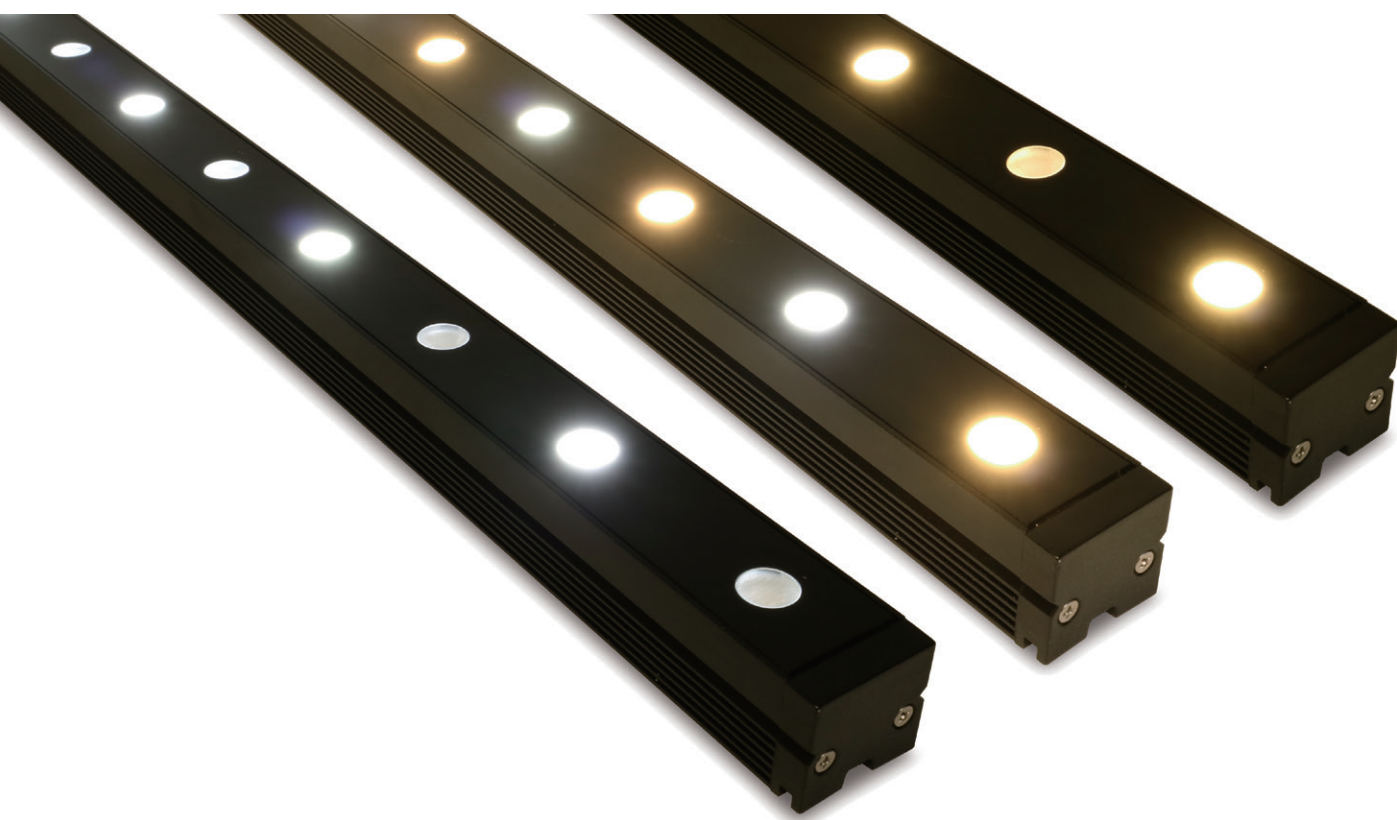


Indoor
Rigid light

LVVTH

Luci Vivoxy Graze THOF®

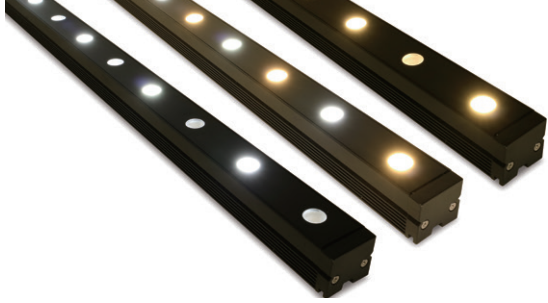


LVVTH NEW



SHIBUYA363 SHIMIZU-BLDG
Location: Japan
Architect office: Tokyu Architects & Engineers INC.

Lighting Design: Tokyo Lighting Design LLC
Construction: Tokyu Construction
Photo: Daisuke Yano



Luci Vivoxy Graze THOF

Tunable wall grazer light to beautifully accentuate wall elements.
 2 CCT LEDs assembled alternately in your choice of combination.
 Selectable brightness by choosing output of constant current driver.

Indoor
 Rigid light

Specifications

Dimensions

Cross section W 27 x H 24 mm
 Length 4 types of fixed length

1200	900
600	300

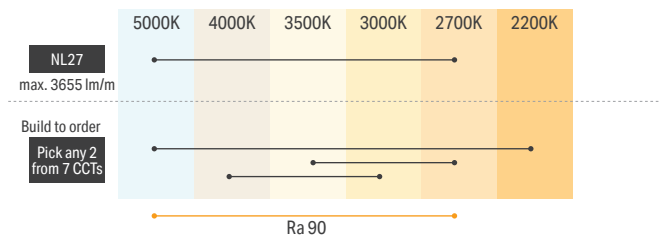
Electrical & Output

@700mA, @ NL27

Color temperature	N 100%	N 100% / L27 100%	L27 100%
Power Consumption (W/m)	20	38.9	20
Luminous flux (lm/m)	2068	3655	1654

* Please refer to the datasheet page for power, CCT and input current for every product length.
 * Required dimmable constant current driver by 0-10V 2ch, Dali DT6/8.

Color temperature

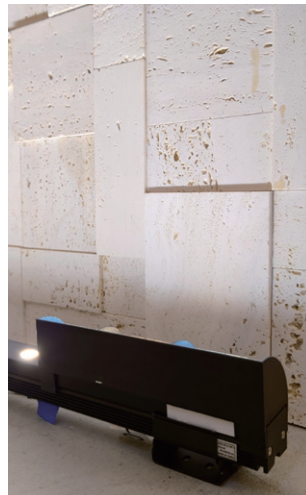
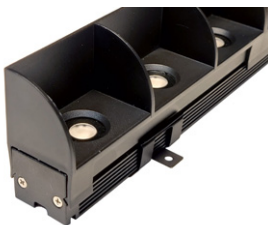


Accessories

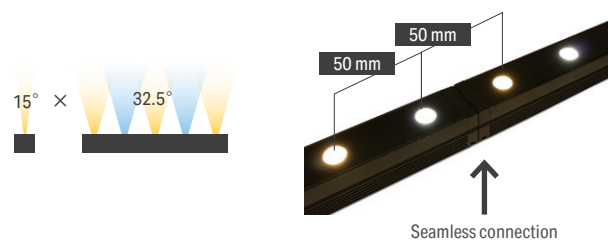
Adjustable mounting fixture



Louver



Optics



TIPS - Recommended distance

Distance from wall

	D=0mm	D=50mm	D=80mm	D=100mm
W: 100%				
W: 100% L:100%				
L: 100%				

LVVTH

Vivoxy Graze

Vivoxy Graze THOF®

RECTA

THOF®

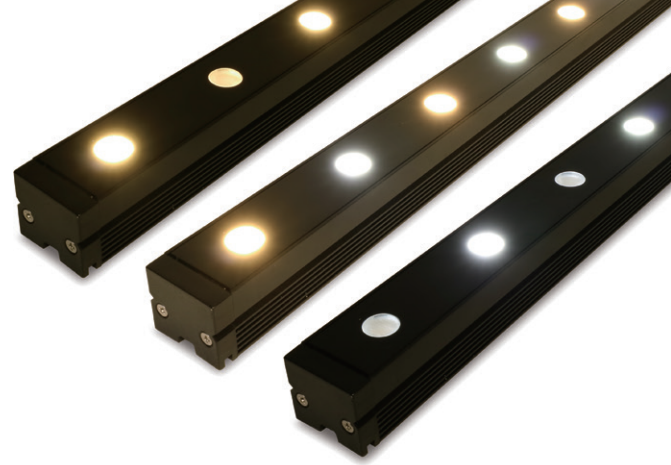
Creide® / lens

silux® K

silux wide® K

nano line

LVVTH NEW



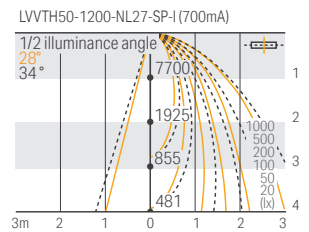
Color management
MacAdam CE

- For grazing light with spread lens 15° x 32° with High CRI LED
- 3 different brightness by choosing 350mA, 500mA or 700mA C.C driver
- Adjustable bracket and louver is available

Model No.

LVVTH50	-	□□□□	-	NL27	-	SP	-	I
Product Name / LED pitch	-	Length	-	Light source color	-	Beam angle	-	Environment
LVVTH50 : 50mm pitch	-	0300 0600 0900 1200	-	NL27 : Natural white to Warm white 2700K	-	SP: 15°×32.5°	-	I : Indoors

Light Intensity Refer to P.110



Specification

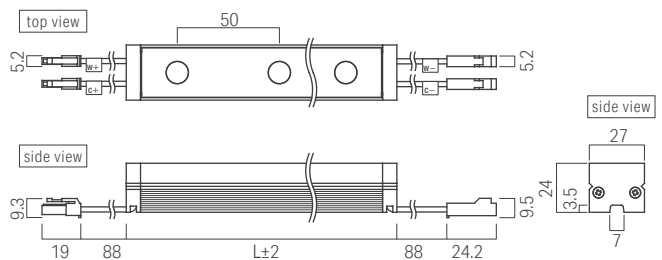
Length	0300			0600			0900			1200		
Model No.	LVVTH50-0300-NL27-SP-I			LVVTH50-0600-NL27-SP-I			LVVTH50-0900-NL27SP-I			LVVTH50-1200-NL27-SP-I		
Rated input current	700mA	500mA	350mA	700mA	500mA	350mA	700mA	500mA	350mA	700mA	500mA	350mA
Power Consumption 2ch max(@typ)	12W	8W	6W	24W	17W	11W	35W	25W	17W	47W	33W	23W
Power Consumption 1ch max(@typ)	6W	5W	3W	12W	9W	6W	18W	13W	9W	24W	17W	12W
Fitting length (L)	300mm			600mm			900mm			1200mm		
Weight	180g			360g			540g			720g		
Luminaire efficacy(2700K)	82.7 lm/W@700mA			82.7 lm/W@700mA			82.7 lm/W@700mA			82.7 lm/W@700mA		
Light source color	○ = Device inventory * = Equivalent											
NL27 5000K~2700K	○	○	○	○	○	○	○	○	○	○	○	○
Dimming rate												
N 100%, L27 0% Ra90	620lm	474lm	332lm	1241lm	948lm	664lm	1861lm	1422lm	995lm	2481lm	1896lm	1327lm
N 100%, L27 100% Ra92	1097lm	844lm	591lm	2193lm	1688lm	1182lm	3290lm	2533lm	1773lm	4386lm	3377lm	2364lm
N 0%, L27 100% Ra92	496lm	381lm	267lm	992lm	762lm	534lm	1489lm	1143lm	800lm	1985lm	1525lm	1067lm

Specification may be subject to change without announcement. The optical data provided on the each product pages are for reference only; the data values are not guaranteed. Please use as reference materials for your planning.

General Specification

Input current	700mA	500mA	350mA
LED beam angle	15°×32.5°		
Environment	Indoors (no condensation)		
Max. length per run*	5.7m	8.4m	12m
Material (body)	Aluminum(black), Polycarbonate		
Attachments	① Mounting fixture 2pcs		
Option parts	① Mounting fixture ② Adjustable mounting fixture ③ Fall prevention mounting fixture ④ Louver ⑤ Joint cable		
Certification	CE		
Dimmable	Yes (0-10V, DALI)		
Power Supplies	Constant current driver is required.		

External dimensions



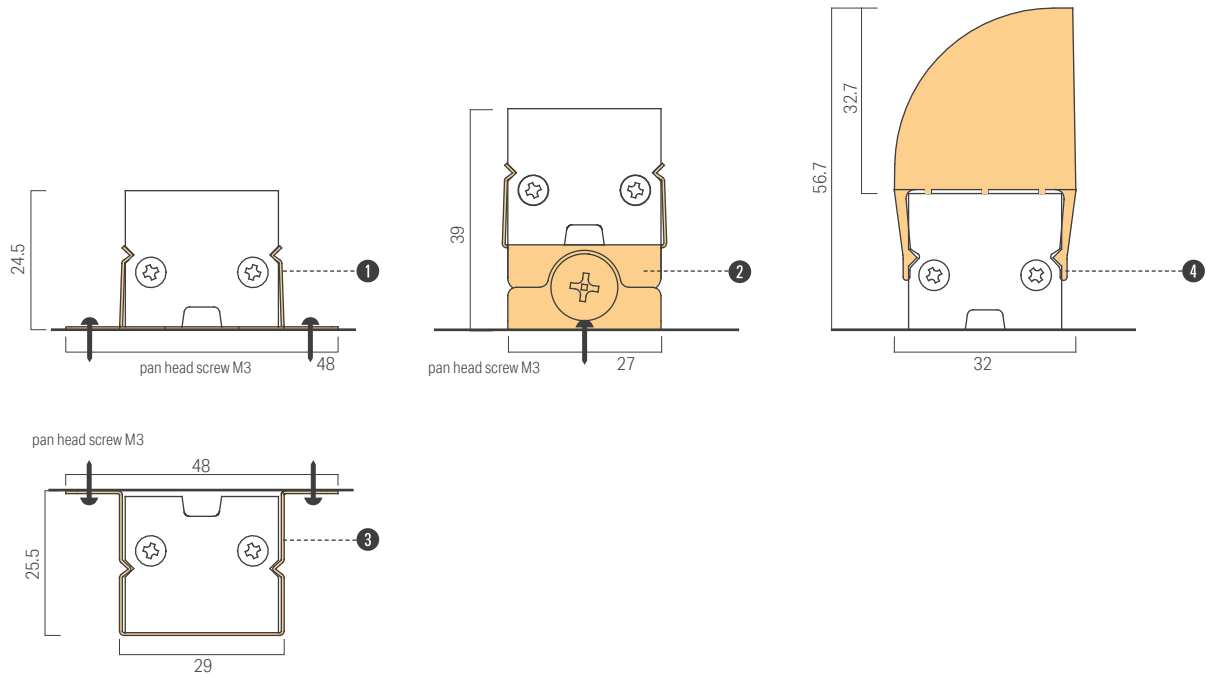
* The connectable number of luminaires depends on the output voltage of the driver used. Check the instructions in the driver manual.

Min. and Max. length per run for Meanwell HVGC series

* A: ON/OFF, B: 0~10V dimming type

Rated current	Meanwell Model No.	Rated wattage	Constant current region	Connectable length range of LVVTH50
700mA	HVGC-65-700-* × 2pcs	65W	9-93V	0.6-2.4m
	HVGC-100-700-* × 2pcs	100W	15-142V	0.9-3.9m
	HVGC-150-700-* × 2pcs	150W	21-215V	1.2-5.7m
500mA	HVGC-65-500-* × 2pcs	65W	13-130V	0.9-3.6m
	HVGC-150-500-* × 2pcs	150W	30-300V	1.5-8.4m
350mA	HVGC-65-350-* × 2pcs	65W	18-186V	0.9-5.1m
	HVGC-100-350-* × 2pcs	100W	29-285V	1.5-8.1m
	HVGC-150-350-* × 2pcs	150W	42-428V	2.1-12.0m

Cross sectional view



Option parts

1 Mounting fixture for Vivoxy Graze **Attachment**

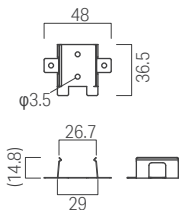


Model No : LVV-PT-A
Attached with LED fixture
2 pcs per LED fixture

For extra order
1 pc / bag

top view

side view



2 Adjustable mounting fixture for Vivoxy Graze



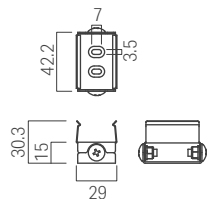
Model No : LVV-PT-B
1 pc/bag

2 pcs per LED fixture is recommended.

For tilting installation

top view

side view



3 Fall prevention mounting fixture for Vivoxy Graze



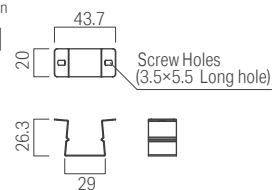
Model No : LVV-PT-C
1 pcs/1 bag

2 pcs per LED fixture is recommended.

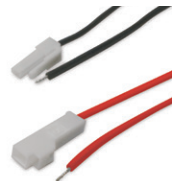
For downward installation

top view

side view



5 Joint cable set 5M for Vivoxy Graze **Required**



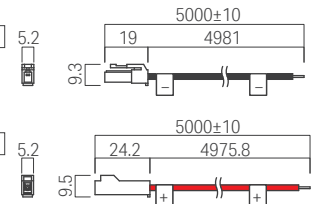
Model No : CAD-5000-SETB-I

1 pc per circuit for connecting the LED fixture to power supply or dimmer driver.

Red : + , Black : -

Socket side

Plug side



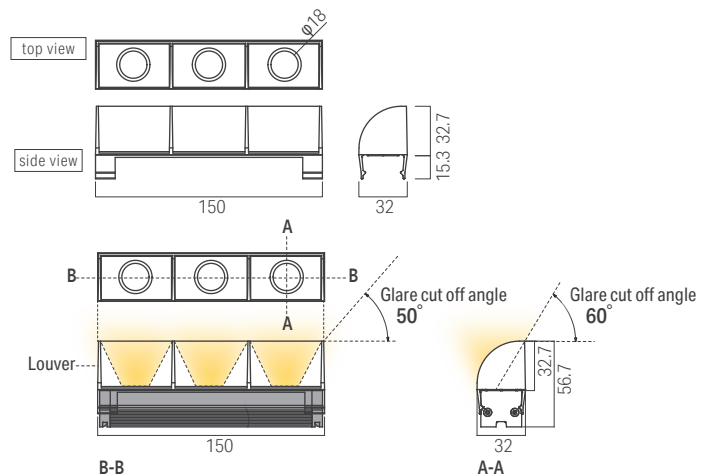
4 Louver for Vivoxy Graze



Model No : LVV50-LV0150
150mmx2 pcs / set

1 set for each 300mm LED fixture.

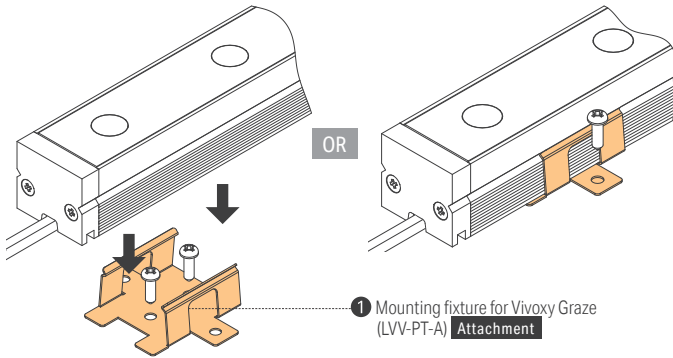
A dedicated louver can be installed on Luci Vivoxy Graze. Direct glare in a parallel or vertical direction against the lighting apparatus can be prevented.



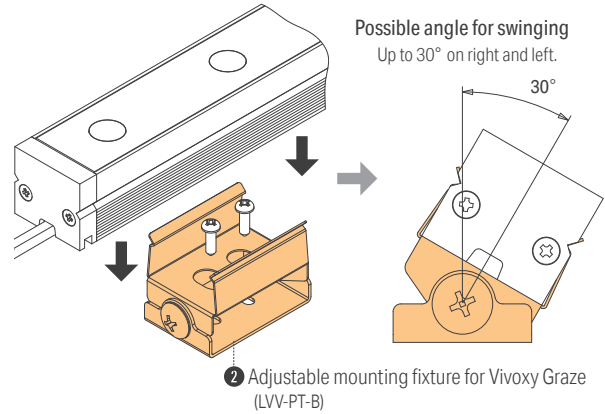
Vivoxo Graze THOF®

Installing the product

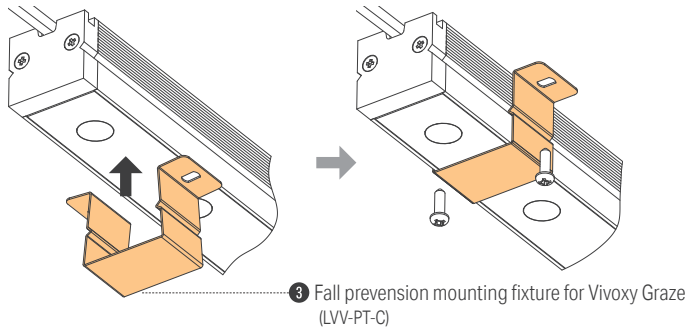
Mounting fixture installation



Adjustable fixture installation



Fall prevention mounting fixture installation



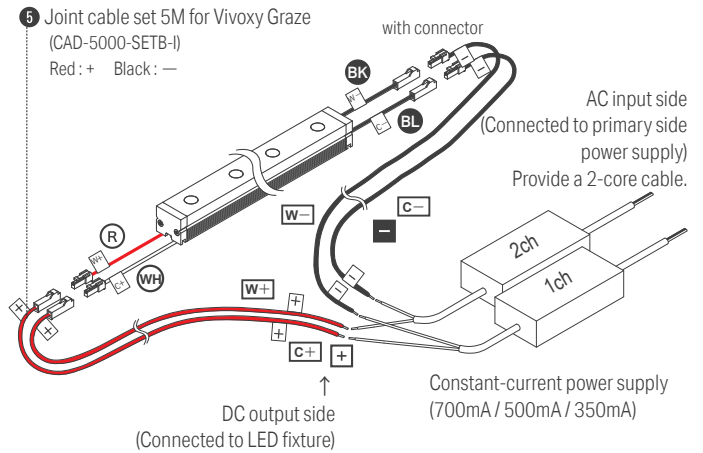
Connecting to the power supply

- Use appropriate constant current driver according to the length of the LED fixtures.
- Do not split the circuit of LED fixtures into multiple from the driver.
- Connect the RED power supply cable to + (plus) of the driver and the BLACK power supply cable to - (minus) of the driver.
- Use an appropriate signal cable and install it according to the instructions caution of the signal cable installation.

Caution: Ensure that power of drivers is off during connecting the LED fixtures. After confirming that LED fixtures are connected to the driver properly before turning on the main switch.

Polarity reversal or wrong procedure of connection, the LED fixture will be damaged due to a high inrush current.

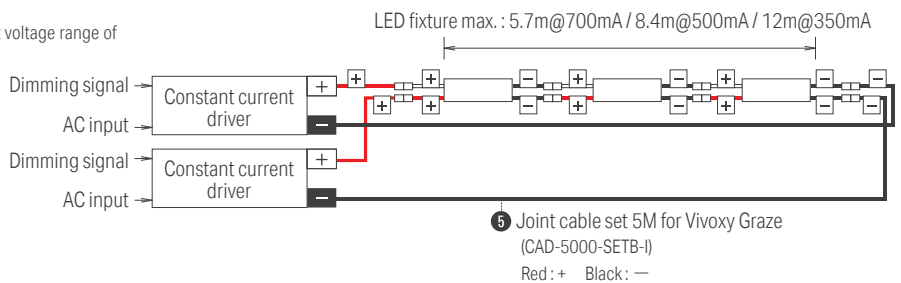
If the driver was turned on before connecting the LED fixtures, turn off the power and wait one or more minutes according to the manual of the driver for releasing the accumulated electricity inside the driver.



System configuration diagram

- Max. connectable length depends on the wattage and output voltage range of the power supply.

- Max. length per circuit of Luci Vivoxo Graze is,
5.7 m @ 700 mA
8.4 m @ 500 mA
12 m @ 350 mA



Min. and Max. length per run for Meanwell HVGC series

* A: ON/OFF, B: 0~10V dimming type

Rated current	Meanwell Model No.	Rated wattage	Constant current region	Connectable length range of LVVTH50
700mA	HVGC-65-700- * × 2pcs	65W	9-93V	0.6-2.4m
	HVGC-100-700- * × 2pcs	100W	15-142V	0.9-3.9m
	HVGC-150-700- * × 2pcs	150W	21-215V	1.2-5.7m
500mA	HVGC-65-500- * × 2pcs	65W	13-130V	0.9-3.6m
	HVGC-150-500- * × 2pcs	150W	30-300V	1.5-8.4m
350mA	HVGC-65-350- * × 2pcs	65W	18-186V	0.9-5.1m
	HVGC-100-350- * × 2pcs	100W	29-285V	1.5-8.1m
	HVGC-150-350- * × 2pcs	150W	42-428V	2.1-12.0m

Guide for selecting constant current driver

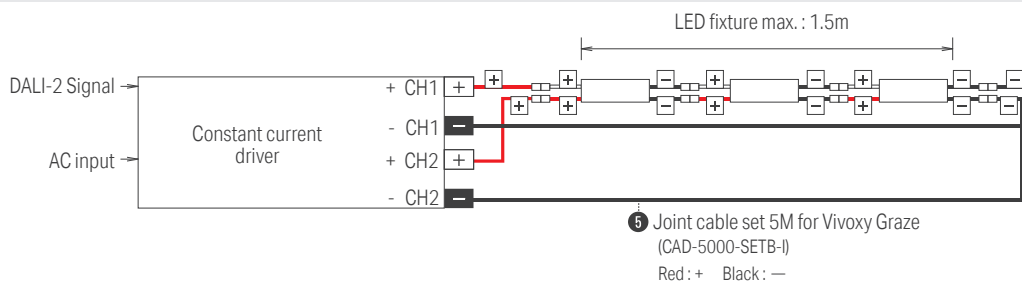
- 1) The minimum and maximum voltage of LED fixture must be within the output voltage range of the constant current driver per channel.
 - 2) The total wattage of LED fixture including 80% load*1 must not exceed the wattage capacity of the constant current driver.
- Please contact us when you have any questions for selecting the constant current driver.
Please follow instructions for the power supply and confirm the operation environment conditions including temperature and humidity.
Specifications and price are subject to change without prior notification.

Min and Max voltage of LED fixture and power consumption at 1ch (1CCT LED)

Rated input current	700mA				500mA				300mA			
	Fitting length per run (mm)	Min. Voltage	Max. Voltage	Power consumption (@Typ) 80% load *1	Min. Voltage	Max. Voltage	Power consumption (@Typ) 80% load	Power consumption (@Max) 80% load	Min. Voltage	Max. Voltage	Power consumption (@Typ) 80% load	Power consumption (@Max) 80% load
300	6V	11V	6W	7W	6V	11V	4W	5W	6V	10V	3W	4W
600	12V	22V	12W	15W	12V	21V	8W	10W	12V	21V	6W	7W
900	19V	32V	18W	22W	18V	32V	12W	15W	18V	31V	9W	11W
1200	25V	43V	24W	29W	24V	42V	17W	21W	24V	42V	11W	14W
1500	31V	54V	29W	37W	31V	53V	21W	26W	30V	52V	14W	18W
1800	37V	65V	35W	44W	37V	64V	25W	31W	36V	63V	17W	21W
2100	44V	76V	41W	51W	43V	74V	29W	36W	42V	73V	20W	25W
2400	50V	86V	47W	59W	49V	85V	33W	41W	48V	84V	23W	28W
2700	56V	97V	53W	66W	55V	96V	37W	46W	54V	94V	26W	32W
3000	62V	108V	59W	74W	61V	106V	41W	52W	60V	104V	28W	35W
3300	69V	119V	65W	81W	67V	117V	45W	57W	66V	115V	31W	39W
3600	75V	130V	71W	88W	73V	127V	50W	62W	72V	125V	34W	43W
3900	81V	140V	76W	96W	80V	138V	54W	67W	78V	136V	37W	46W
4200	87V	151V	82W	103W	86V	149V	58W	72W	84V	146V	40W	50W
4500	94V	162V	88W	110W	92V	159V	62W	77W	90V	157V	43W	53W
4800	100V	173V	94W	118W	98V	170V	66W	83W	96V	167V	45W	57W
5100	106V	184V	100W	125W	104V	181V	70W	88W	102V	177V	48W	60W
5400	112V	194V	106W	132W	110V	191V	74W	93W	108V	188V	51W	64W
5700	119V	205V	112W	140W	116V	202V	78W	98W	114V	198V	54W	67W
6000	125V	216V	118W	147W	122V	212V	83W	103W	120V	209V	57W	71W
6300	131V	227V	123W	154W	129V	223V	87W	108W	126V	219V	60W	74W
6600	137V	238V	129W	162W	135V	234V	91W	113W	132V	230V	62W	78W
6900	144V	248V	135W	169W	141V	244V	95W	119W	138V	240V	65W	82W
7200	150V	259V	141W	176W	147V	255V	99W	124W	144V	251V	68W	85W
7500	156V	270V	147W	184W	153V	266V	103W	129W	150V	261V	71W	89W
7800	162V	281V	153W	191W	159V	276V	107W	134W	156V	271V	74W	92W
8100	168V	292V	159W	198W	165V	287V	111W	139W	162V	282V	77W	96W
8400	175V	302V	165W	206W	171V	297V	116W	144W	168V	292V	79W	99W
8700	181V	313V	171W	213W	177V	308V	120W	150W	174V	303V	82W	103W
9000	187V	324V	176W	221W	184V	319V	124W	155W	180V	313V	85W	106W
9300	193V	335V	182W	228W	190V	329V	128W	160W	186V	324V	88W	110W
9600	200V	346V	188W	235W	196V	340V	132W	165W	192V	334V	91W	113W
9900	206V	356V	194W	243W	202V	350V	136W	170W	198V	345V	94W	117W
10200	212V	367V	200W	250W	208V	361V	140W	175W	204V	355V	96W	120W
10500	218V	378V	206W	257W	214V	372V	144W	180W	210V	365V	99W	124W
10800	225V	389V	212W	265W	220V	382V	149W	186W	216V	376V	102W	128W
11100	231V	400V	218W	272W	226V	393V	153W	191W	222V	386V	105W	131W
11400	237V	410V	223W	279W	233V	404V	157W	196W	228V	397V	108W	135W
11700	243V	421V	229W	287W	239V	414V	161W	201W	234V	407V	111W	138W
12000	250V	432V	235W	294W	245V	425V	165W	206W	240V	418V	113W	142W
12300	256V	443V	241W	301W	251V	435V	169W	211W	246V	428V	116W	145W

*Please contact our sales if L22(2200K) LED is the one of CCTs of the LED fixture. The connectable length is shorter than above table.

System configuration diagram



Min and Max. length per run for eldoLED DL0560A 2ch, 150-1400mA, DALI-2 DT6)

Rated Current	eldoLED Model No.	Rated wattage	Constant Current region	Connectable length range of LWTH50
700mA	DL0560A-700mA	50W	2~55V	0.3-1.5m
500mA	DL0560A-500mA	50W	2~55V	0.3-1.5m
350mA	DL0560A-350mA	50W	2~55V	0.3-1.5m

Max brightness when using this driver will be about half of its specification.

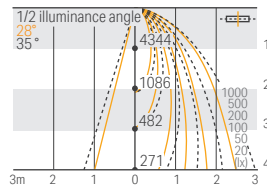
Vivoxy Graze THOF®

Illuminance data

700mA

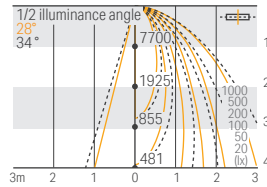
LVVTH50-1200-NL27-SP-I

Light source color 5000K
N:100%, L27:0%
Brightness 4344 cd
Luminous flux 2482 lm
Color rendering index Ra 90



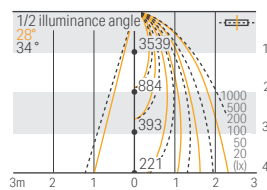
LVVTH50-1200-NL27-SP-I

Light source color -
N:100%, L27:100%
Brightness 7700 cd
Luminous flux 4387 lm
Color rendering index Ra 92



LVVTH50-1200-NL27-SP-I

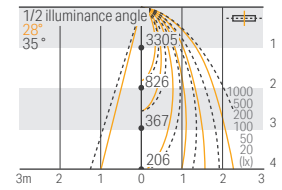
Light source color 2700K
N:0%, L27:100%
Brightness 3539 cd
Luminous flux 1985 lm
Color rendering index Ra 93



500mA

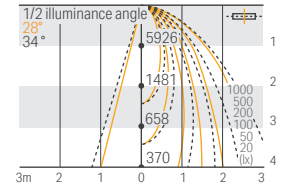
LVVTH50-1200-NL27-SP-I

Light source color 5000K
N:100%, L27:0%
Brightness 3305 cd
Luminous flux 1896 lm
Color rendering index Ra 90



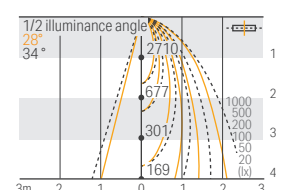
LVVTH50-1200-NL27-SP-I

Light source color -
N:100%, L27:100%
Brightness 5926 cd
Luminous flux 3377 lm
Color rendering index Ra 94



LVVTH50-1200-NL27-SP-I

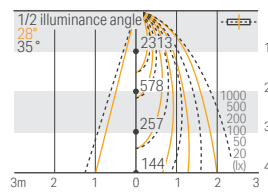
Light source color 2700K
N:0%, L27:100%
Brightness 2710 cd
Luminous flux 1525 lm
Color rendering index Ra 93



350mA

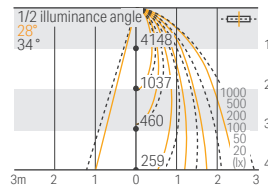
LWTH50-1200-NL27-SP-I

Light source color 5000K
 N:100%, L27:0%
 Brightness 2313 cd
 Luminous flux 1328 lm
 Color rendering index Ra 90



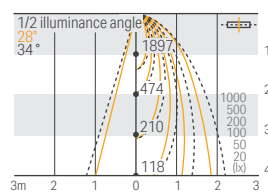
LWTH50-1200-NL27-SP-I

Light source color -
 N:100%, L27:100%
 Brightness 4148 cd
 Luminous flux 2364 lm
 Color rendering index Ra 93



LWTH50-1200-NL27-SP-I

Light source color 2700K
 N:0%, L27:100%
 Brightness 1897 cd
 Luminous flux 1068 lm
 Color rendering index Ra 93

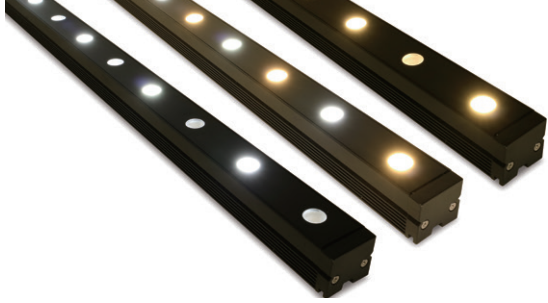


LVVTH NEW



SHIBUYA363 SHIMIZU-BLDG
Location: Japan
Architect office: Tokyu Architects & Engineers INC.

Lighting Design: Tokyo Lighting Design LLC
Construction: Tokyu Construction
Photo: Daisuke Yano



Luci Vivoxy Graze THOF

Tunable wall grazer light to beautifully accentuate wall elements.
 2 CCT LEDs assembled alternately in your choice of combination.
 Selectable brightness by choosing output of constant current driver.

Indoor

Rigid light

LVTH

Vivoxy Graze

Vivoxy Graze THOF®

RECTA

THOF®

Creide® / lens

silux® K

silux wide® K

nano line

Specifications

Dimensions

Cross section W 27 x H 24 mm
 Length 4 types of fixed length

1200	900
600	300

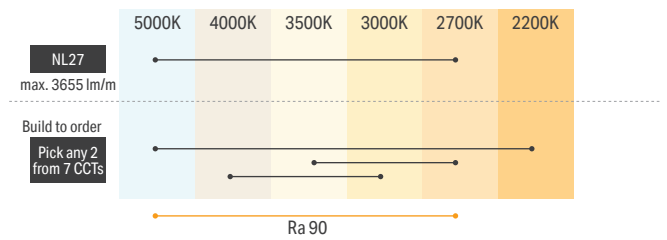
Electrical & Output

@700mA, @ NL27

Color temperature	N 100%	N 100% / L27 100%	L27 100%
Power Consumption (W/m)	20	38.9	20
Luminous flux (lm/m)	2068	3655	1654

* Please refer to the datasheet page for power, CCT and input current for every product length.
 * Required dimmable constant current driver by 0-10V 2ch, Dali DT6/8.

Color temperature



Accessories

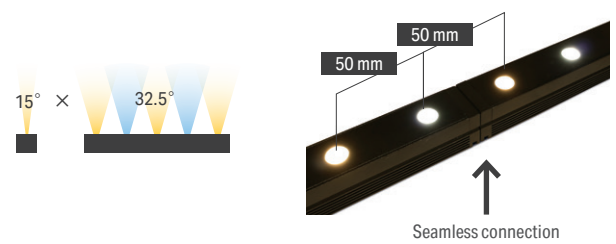
Adjustable mounting fixture



Louver



Optics

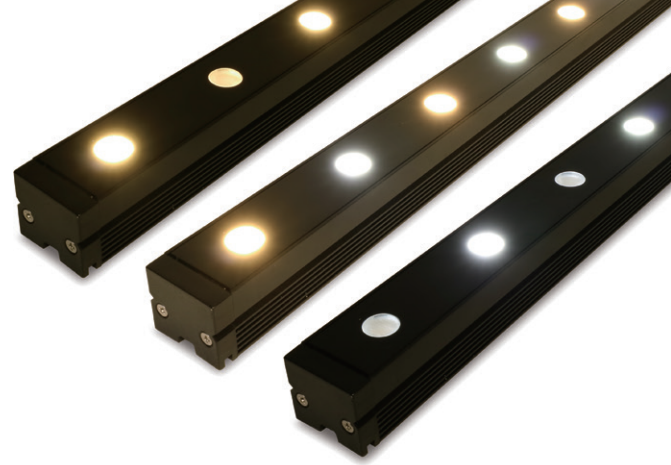


TIPS - Recommended distance

Distance from wall

	D=0mm	D=50mm	D=80mm	D=100mm
W: 100%				
W: 100% L:100%				
L: 100%				

LVVTH NEW



Color management
MacAdam



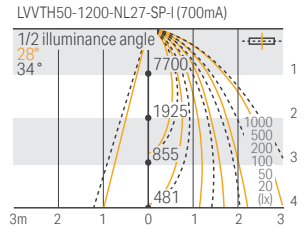
- For grazing light with spread lens 15° x 32° with High CRI LED
- 3 different brightness by choosing 350mA, 500mA or 700mA C.C driver
- Adjustable bracket and louver is available

Model No.

LVVTH50 - □□□□ - **NL27** - **SP** - **I**

Product Name / LED pitch	Length	Light source color	Beam angle	Environment
LVVTH50 : 50mm pitch	0300 0600 0900 1200	NL27 : Natural white to Warm white 2700K	SP: 15° x 32.5°	I : Indoors

Light Intensity Refer to P.110



Specification

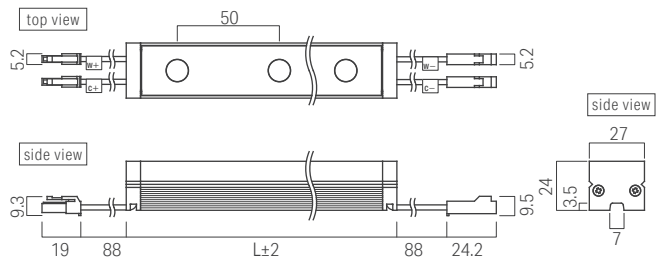
Length	0300			0600			0900			1200		
	LVVTH50-0300-NL27-SP-I			LVVTH50-0600-NL27-SP-I			LVVTH50-0900-NL27SP-I			LVVTH50-1200-NL27-SP-I		
Rated input current	700mA	500mA	350mA	700mA	500mA	350mA	700mA	500mA	350mA	700mA	500mA	350mA
Power Consumption 2ch max(@typ)	12W	8W	6W	24W	17W	11W	35W	25W	17W	47W	33W	23W
Power Consumption 1ch max(@typ)	6W	5W	3W	12W	9W	6W	18W	13W	9W	24W	17W	12W
Fitting length (L)	300mm			600mm			900mm			1200mm		
Weight	180g			360g			540g			720g		
Luminaire efficacy(2700K)	82.7 lm/W@700mA			82.7 lm/W@700mA			82.7 lm/W@700mA			82.7 lm/W@700mA		
Light source color	○ = Device inventory * = Equivalent											
NL27 5000K~2700K	○	○	○	○	○	○	○	○	○	○	○	○
Dimming rate												
N 100%, L27 0% Ra90	620lm	474lm	332lm	1241lm	948lm	664lm	1861lm	1422lm	995lm	2481lm	1896lm	1327lm
N 100%, L27 100% Ra92	1097lm	844lm	591lm	2193lm	1688lm	1182lm	3290lm	2533lm	1773lm	4386lm	3377lm	2364lm
N0%, L27 100% Ra92	496lm	381lm	267lm	992lm	762lm	534lm	1489lm	1143lm	800lm	1985lm	1525lm	1067lm

Specification may be subject to change without announcement. The optical data provided on the each product pages are for reference only; the data values are not guaranteed. Please use as reference materials for your planning.

General Specification

Input current	700mA	500mA	350mA
LED beam angle	15°x32.5°		
Environment	Indoors (no condensation)		
Max. length per run*	5.7m	8.4m	12m
Material (body)	Aluminum(black), Polycarbonate		
Attachments	① Mounting fixture 2pcs		
Option parts	① Mounting fixture ② Adjustable mounting fixture ③ Fall prevention mounting fixture ④ Louver ⑤ Joint cable		
Certification	CE		
Dimmable	Yes (0-10V, DALI)		
Power Supplies	Constant current driver is required.		

External dimensions



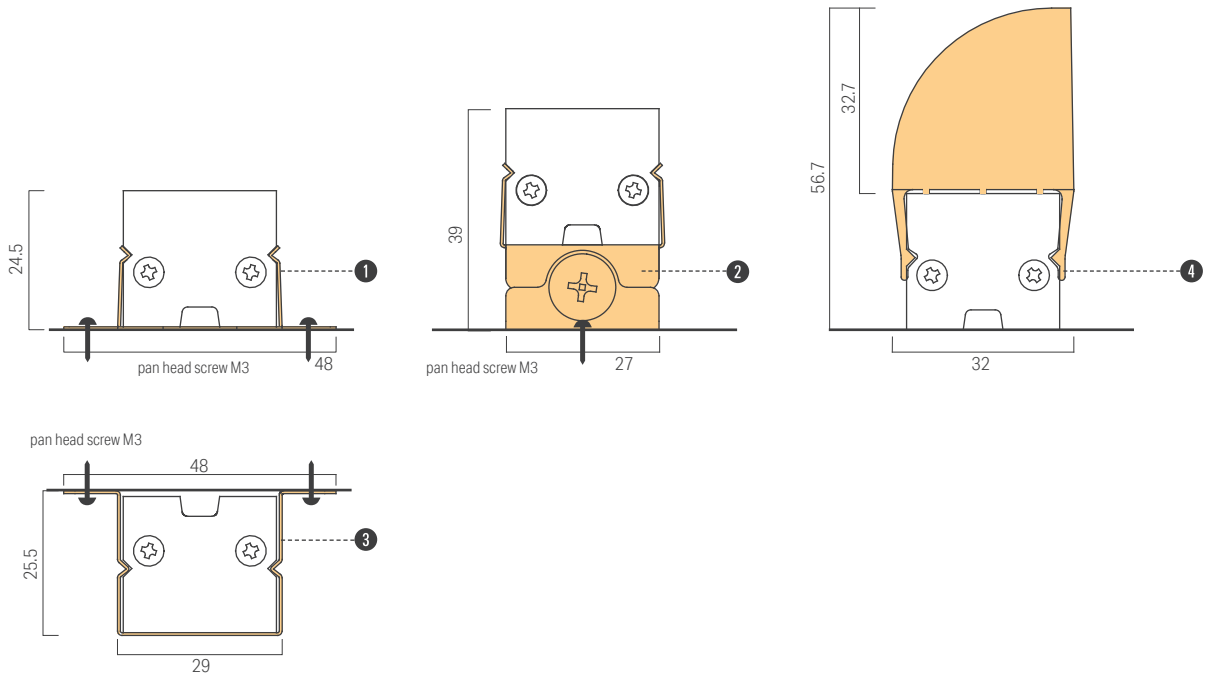
* The connectable number of luminaires depends on the output voltage of the driver used. Check the instructions in the driver manual.

Min. and Max. length per run for Meanwell HVGC series

* A: ON/OFF, B: 0~10V dimming type

Rated current	Meanwell Model No.	Rated wattage	Constant current region	Connectable length range of LVVTH50
700mA	HVGC-65-700-* × 2pcs	65W	9-93V	0.6-2.4m
	HVGC-100-700-* × 2pcs	100W	15-142V	0.9-3.9m
	HVGC-150-700-* × 2pcs	150W	21-215V	1.2-5.7m
500mA	HVGC-65-500-* × 2pcs	65W	13-130V	0.9-3.6m
	HVGC-150-500-* × 2pcs	150W	30-300V	1.5-8.4m
350mA	HVGC-65-350-* × 2pcs	65W	18-186V	0.9-5.1m
	HVGC-100-350-* × 2pcs	100W	29-285V	1.5-8.1m
	HVGC-150-350-* × 2pcs	150W	42-428V	2.1-12.0m

Cross sectional view



Option parts

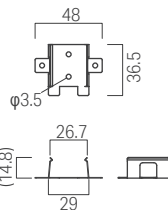
1 Mounting fixture for Vivoxy Graze **Attachment**



Model No : LVV-PT-A
Attached with LED fixture
2 pcs per LED fixture

For extra order
1 pc / bag

top view



side view

2 Adjustable mounting fixture for Vivoxy Graze

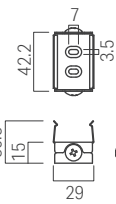


Model No : LVV-PT-B
1 pc/bag

2 pcs per LED fixture is recommended.

For tilting installation

top view



side view

3 Fall prevention mounting fixture for Vivoxy Graze

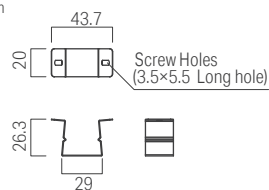


Model No : LVV-PT-C
1 pcs/1 bag

2 pcs per LED fixture is recommended.

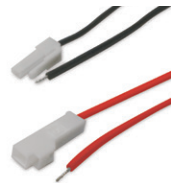
For downward installation

top view



side view

5 Joint cable set 5M for Vivoxy Graze **Required**

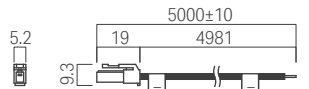


Model No : CAD-5000-SETB-I

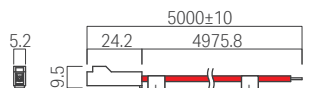
1 pc per circuit for connecting the LED fixture to power supply or dimmer driver.

Red : + , Black : -

Socket side



Plug side



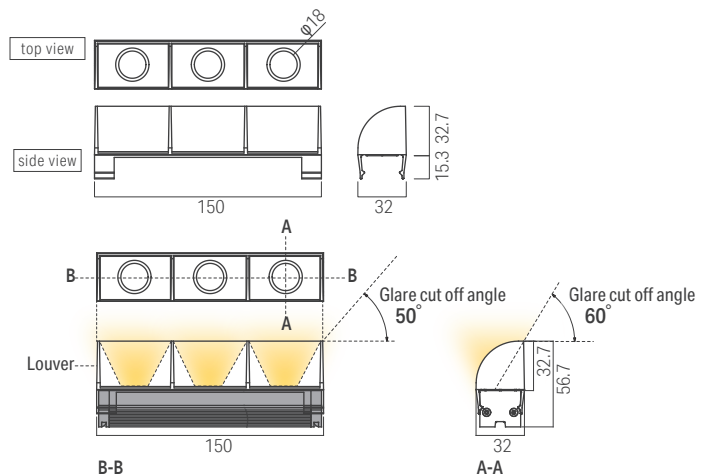
4 Louver for Vivoxy Graze



Model No : LVV50-LV0150
150mmx2 pcs / set

1 set for each 300mm LED fixture.

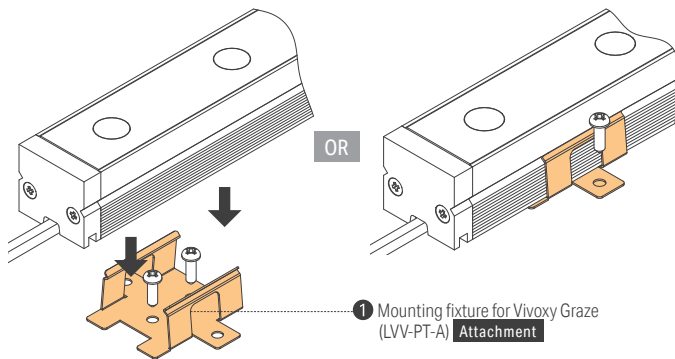
A dedicated louver can be installed on Luci Vivoxy Graze. Direct glare in a parallel or vertical direction against the lighting apparatus can be prevented.



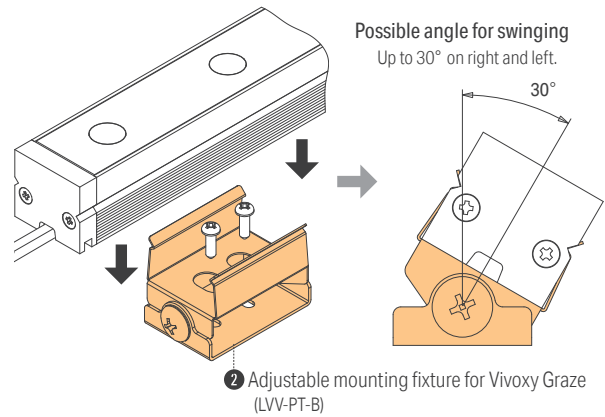
Vivoxy Graze THOF®

Installing the product

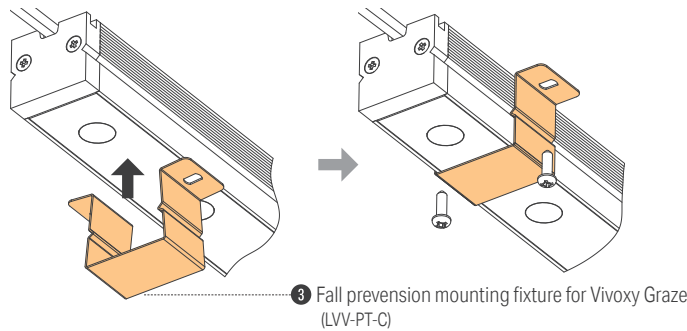
Mounting fixture installation



Adjustable fixture installation



Fall prevention mounting fixture installation



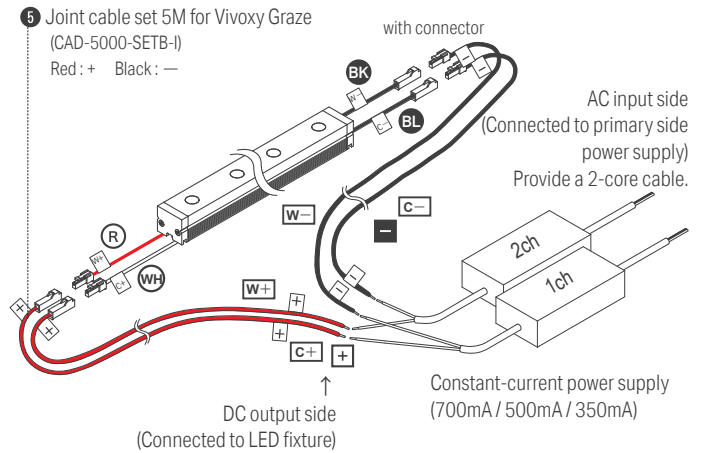
Connecting to the power supply

- Use appropriate constant current driver according to the length of the LED fixtures.
- Do not split the circuit of LED fixtures into multiple from the driver.
- Connect the RED power supply cable to + (plus) of the driver and the BLACK power supply cable to - (minus) of the driver.
- Use an appropriate signal cable and install it according to the instructions caution of the signal cable installation.

Caution: Ensure that power of drivers is off during connecting the LED fixtures. After confirming that LED fixtures are connected to the driver properly before turning on the main switch.

Polarity reversal or wrong procedure of connection, the LED fixture will be damaged due to a high inrush current.

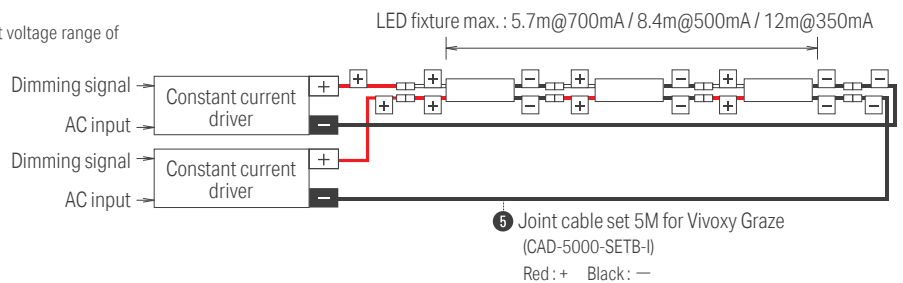
If the driver was turned on before connecting the LED fixtures, turn off the power and wait one or more minutes according to the manual of the driver for releasing the accumulated electricity inside the driver.



System configuration diagram

- Max. connectable length depends on the wattage and output voltage range of the power supply.

- Max. length per circuit of Luci Vivoxy Graze is,
5.7 m @ 700 mA
8.4 m @ 500 mA
12 m @ 350 mA



Min. and Max. length per run for Meanwell HVGC series

* A: ON/OFF, B: 0~10V dimming type

Rated current	Meanwell Model No.	Rated wattage	Constant current region	Connectable length range of LVVTH50
700mA	HVGC-65-700- * × 2pcs	65W	9-93V	0.6-2.4m
	HVGC-100-700- * × 2pcs	100W	15-142V	0.9-3.9m
	HVGC-150-700- * × 2pcs	150W	21-215V	1.2-5.7m
500mA	HVGC-65-500- * × 2pcs	65W	13-130V	0.9-3.6m
	HVGC-150-500- * × 2pcs	150W	30-300V	1.5-8.4m
350mA	HVGC-65-350- * × 2pcs	65W	18-186V	0.9-5.1m
	HVGC-100-350- * × 2pcs	100W	29-285V	1.5-8.1m
	HVGC-150-350- * × 2pcs	150W	42-428V	2.1-12.0m

Guide for selecting constant current driver

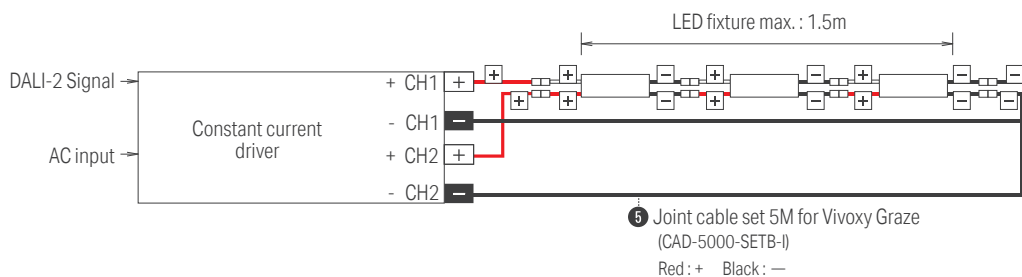
- 1) The minimum and maximum voltage of LED fixture must be within the output voltage range of the constant current driver per channel.
 - 2) The total wattage of LED fixture including 80% load*1 must not exceed the wattage capacity of the constant current driver.
- Please contact us when you have any questions for selecting the constant current driver.
Please follow instructions for the power supply and confirm the operation environment conditions including temperature and humidity.
Specifications and price are subject to change without prior notification.

Min and Max voltage of LED fixture and power consumption at 1ch (1CCT LED)

Rated input current	700mA				500mA				300mA			
	Fitting length per run (mm)	Min. Voltage	Max. Voltage	Power consumption (@Typ)* 80% load *1	Min. Voltage	Max. Voltage	Power consumption (@Typ)	Power consumption (@Max)* 80% load	Min. Voltage	Max. Voltage	Power consumption (@Typ)	Power consumption (@Max)* 80% load
300	6V	11V	6W	7W	6V	11V	4W	5W	6V	10V	3W	4W
600	12V	22V	12W	15W	12V	21V	8W	10W	12V	21V	6W	7W
900	19V	32V	18W	22W	18V	32V	12W	15W	18V	31V	9W	11W
1200	25V	43V	24W	29W	24V	42V	17W	21W	24V	42V	11W	14W
1500	31V	54V	29W	37W	31V	53V	21W	26W	30V	52V	14W	18W
1800	37V	65V	35W	44W	37V	64V	25W	31W	36V	63V	17W	21W
2100	44V	76V	41W	51W	43V	74V	29W	36W	42V	73V	20W	25W
2400	50V	86V	47W	59W	49V	85V	33W	41W	48V	84V	23W	28W
2700	56V	97V	53W	66W	55V	96V	37W	46W	54V	94V	26W	32W
3000	62V	108V	59W	74W	61V	106V	41W	52W	60V	104V	28W	35W
3300	69V	119V	65W	81W	67V	117V	45W	57W	66V	115V	31W	39W
3600	75V	130V	71W	88W	73V	127V	50W	62W	72V	125V	34W	43W
3900	81V	140V	76W	96W	80V	138V	54W	67W	78V	136V	37W	46W
4200	87V	151V	82W	103W	86V	149V	58W	72W	84V	146V	40W	50W
4500	94V	162V	88W	110W	92V	159V	62W	77W	90V	157V	43W	53W
4800	100V	173V	94W	118W	98V	170V	66W	83W	96V	167V	45W	57W
5100	106V	184V	100W	125W	104V	181V	70W	88W	102V	177V	48W	60W
5400	112V	194V	106W	132W	110V	191V	74W	93W	108V	188V	51W	64W
5700	119V	205V	112W	140W	116V	202V	78W	98W	114V	198V	54W	67W
6000	125V	216V	118W	147W	122V	212V	83W	103W	120V	209V	57W	71W
6300	131V	227V	123W	154W	129V	223V	87W	108W	126V	219V	60W	74W
6600	137V	238V	129W	162W	135V	234V	91W	113W	132V	230V	62W	78W
6900	144V	248V	135W	169W	141V	244V	95W	119W	138V	240V	65W	82W
7200	150V	259V	141W	176W	147V	255V	99W	124W	144V	251V	68W	85W
7500	156V	270V	147W	184W	153V	266V	103W	129W	150V	261V	71W	89W
7800	162V	281V	153W	191W	159V	276V	107W	134W	156V	271V	74W	92W
8100	168V	292V	159W	198W	165V	287V	111W	139W	162V	282V	77W	96W
8400	175V	302V	165W	206W	171V	297V	116W	144W	168V	292V	79W	99W
8700	181V	313V	171W	213W	177V	308V	120W	150W	174V	303V	82W	103W
9000	187V	324V	176W	221W	184V	319V	124W	155W	180V	313V	85W	106W
9300	193V	335V	182W	228W	190V	329V	128W	160W	186V	324V	88W	110W
9600	200V	346V	188W	235W	196V	340V	132W	165W	192V	334V	91W	113W
9900	206V	356V	194W	243W	202V	350V	136W	170W	198V	345V	94W	117W
10200	212V	367V	200W	250W	208V	361V	140W	175W	204V	355V	96W	120W
10500	218V	378V	206W	257W	214V	372V	144W	180W	210V	365V	99W	124W
10800	225V	389V	212W	265W	220V	382V	149W	186W	216V	376V	102W	128W
11100	231V	400V	218W	272W	226V	393V	153W	191W	222V	386V	105W	131W
11400	237V	410V	223W	279W	233V	404V	157W	196W	228V	397V	108W	135W
11700	243V	421V	229W	287W	239V	414V	161W	201W	234V	407V	111W	138W
12000	250V	432V	235W	294W	245V	425V	165W	206W	240V	418V	113W	142W
12300	256V	443V	241W	301W	251V	435V	169W	211W	246V	428V	116W	145W

*Please contact our sales if L22(2200K) LED is the one of CCTs of the LED fixture. The connectable length is shorter than above table.

System configuration diagram



Min and Max. length per run for eldoLED DL0560A 2ch, 150-1400mA,DALI-2 DT6)

Rated Current	eldoLED Model No.	Rated wattage	Constant Current region	Connectable length range of LVVTH50
700mA	DL0560A-700mA	50W	2-55V	0.3-1.5m
500mA	DL0560A-500mA	50W	2-55V	0.3-1.5m
350mA	DL0560A-350mA	50W	2-55V	0.3-1.5m

Max brightness when using this driver will be about half of its specification.

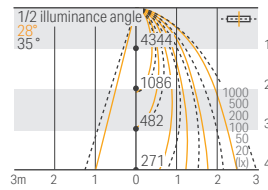
Vivoxy Graze THOF®

Illuminance data

700mA

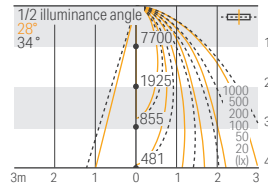
LVVTH50-1200-NL27-SP-I

Light source color 5000K
N:100%, L27:0%
Brightness 4344 cd
Luminous flux 2482 lm
Color rendering index Ra 90



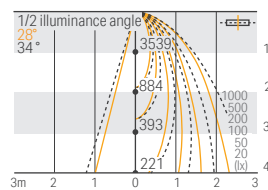
LVVTH50-1200-NL27-SP-I

Light source color -
N:100%, L27:100%
Brightness 7700 cd
Luminous flux 4387 lm
Color rendering index Ra 92



LVVTH50-1200-NL27-SP-I

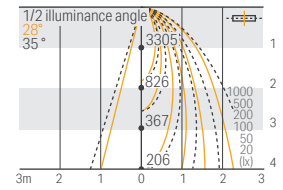
Light source color 2700K
N:0%, L27:100%
Brightness 3539 cd
Luminous flux 1985 lm
Color rendering index Ra 93



500mA

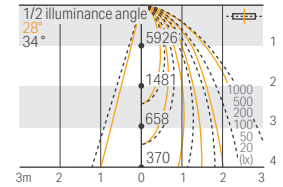
LVVTH50-1200-NL27-SP-I

Light source color 5000K
N:100%, L27:0%
Brightness 3305 cd
Luminous flux 1896 lm
Color rendering index Ra 90



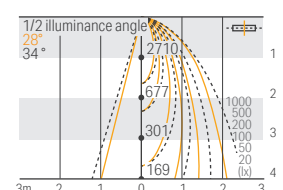
LVVTH50-1200-NL27-SP-I

Light source color -
N:100%, L27:100%
Brightness 5926 cd
Luminous flux 3377 lm
Color rendering index Ra 94



LVVTH50-1200-NL27-SP-I

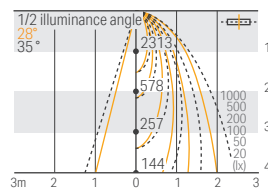
Light source color 2700K
N:0%, L27:100%
Brightness 2710 cd
Luminous flux 1525 lm
Color rendering index Ra 93



350mA

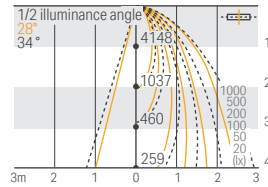
LWTH50-1200-NL27-SP-I

Light source color 5000K
 N:100%, L27:0%
 Brightness 2313 cd
 Luminous flux 1328 lm
 Color rendering index Ra 90



LWTH50-1200-NL27-SP-I

Light source color -
 N:100%, L27:100%
 Brightness 4148 cd
 Luminous flux 2364 lm
 Color rendering index Ra 93



LWTH50-1200-NL27-SP-I

Light source color 2700K
 N:0%, L27:100%
 Brightness 1897 cd
 Luminous flux 1068 lm
 Color rendering index Ra 93

