

Luci RIMiT us

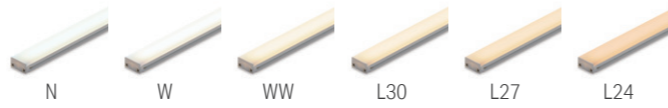
LRMUS

Color management
MacAdam 3 step



1 years warranty

- Only 5.8mm thickness with dot-free light emitting surface
- Custom lengths available in every 25mm increment, up to 1508mm
- Selectable between both and one side cable feed, open end or connector



Model No. (Open end)

LRMUS - T [] [] [] [] [] - [] - DF - I - 6

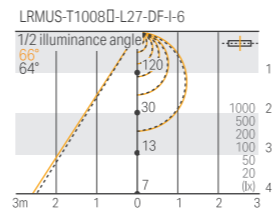
Model No. (Connector)

LRMUS - T [] [] [] [] [] - [] - DF - I - 6 (C)

Product Name - Length / Lead wire - Light source color - Cover Type - Wattage - Connector

LRMUS - Refer to Custom order length - W: Both ends S: One end - N: Natural white, W: White, WW: Warm white 3500K, L30: Warm white 3000K, L27: Warm white 2700K, L24: Warm white 2400K - DF: Diffuser - Environment: I: Indoor - 6: 6.4W/m (C): Connector

Light Intensity



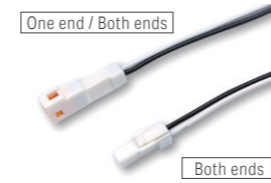
Specification

Model No.	Open end	LRMUS-T1000 S/W- [] -DF-I-6
	Connector	LRMUS-T1000 S/W- [] -DF-I-6 (C)
Power consumption		6.4 W/m
Fitting length(L)		33 to 1508mm (Refer to Custom order length)
Weight		70g / 1008 mm
Luminaire efficacy(2700K)		62.7 lm/W
Light source color	Delivered CCT	○ = Device inventory
N 5000K Ra92	4600K	○ 465 lm
W 4000K Ra91	3700K	○ 460 lm
WW 3500K Ra93	3300K	○ 442 lm
L30 3000K Ra92	2900K	○ 405 lm
L27 2700K Ra92	2600K	○ 402 lm
L24 2400K Ra92	2400K	○ 369 lm

Open end



Connector



The optical data provided on the each product pages are for reference only; the data values are not guaranteed. Please use as reference materials for your planning.

General Specification

Input voltage	DC24V
Environment	Indoor (no condensation)
Max. length Per circuit	3.5m
Material (body)	Polycarbonate, Aluminum
Attachments	-
Accessories	1 Mounting clip for RIMiT us 2 Lift Parts for RIMiT 3 Magnet set A 4 Cable 5M TR Connector 5 Magnetic tape 6 double-sided tape
Certification	CE
Dimmable	Yes (0-10V/1-10V, DMX, DALI, PWM)
Power Supplies	Required

Max. connectable length per power supply

Length of LED fixture (70% loading factor) *: split into multiple circuits	Power supply
6.4 W/m	
~5.4 m*	50W power supply
~10.9 m*	100W power supply
~16.4 m*	150W power supply

External dimension

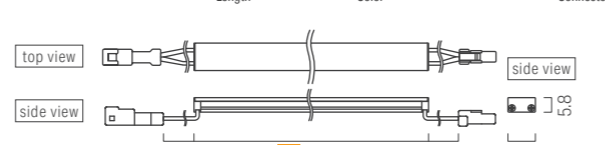
Luci RIMiT Indoor / W Both ends lead wire, Open end

LRMUS - T [] [] [] [] [] W - [] - DF - I - 6

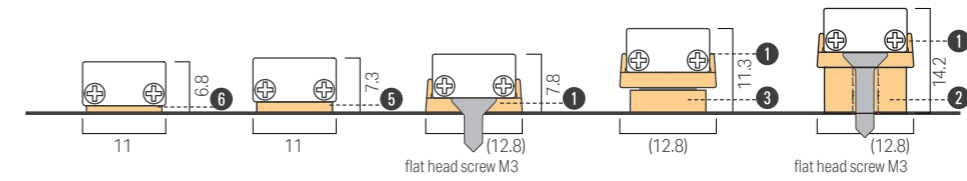


Luci RIMiT Indoor / W Both ends lead wire, (C) Connector

LRMUS - T [] [] [] [] [] W - [] - DF - I - 6 (C)



Cross sectional view when installing accessories

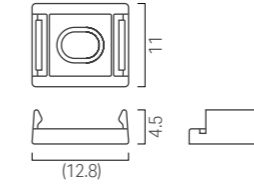
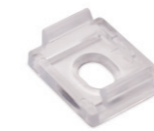


Accessories

1 Mounting clip for RIMiT us

Model No.: LRMUS-PT-A

For magnet installation, please refer the required number of clip to the table on P.8

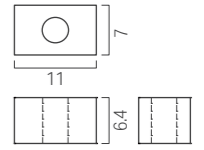


2 Lift Parts for RIMiT

Model No.: LRM-PT-B
2 pcs/1 bag

Lift parts must be used with 1 mounting clip

For magnet installation, please refer the required number of clip to the table on P.8

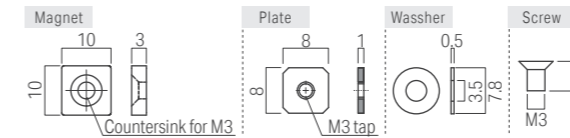


for Mounting clip installation

3 Magnet Set A

Model No.: MG-A
5 pcs/1 bag

Used for installing LED fixture with 1 Mounting clip on metal plate. Metal plate is required by installer.



Power supply cable

4 Power supply cable 5M

Model No.: CAD-5000-MEFE-O

1 pcs per circuit for connecting the LED fixture to power supply or dimmer driver.



For magnetic tape installation

5 Magnetic tape for RIMiT 5m

Model No.: LRM-MT5
5 m

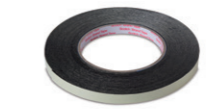


For double sided tape installation

6 Double sided tape 15m

Model No.: LFP-AT15

Width: 10mm



Custom order products size

Length	Fitting length	Power consumption	Mounting Clip	
Length	L	(W)		
0033	32.2	0.2	1 pcs	
0058	57.2	0.3		
0083	82.2	0.5		
0108	107.2	0.6	2 pcs Recommended pitch 60 to 230mm	
0133	132.2	0.8		
0158	157.2	1.0		
0183	182.2	1.1		
0208	207.2	1.3		
0233	232.2	1.4		
0258	257.2	1.6		
0283	282.2	1.8		3 pcs Recommended pitch 140 to 370mm
0308	307.2	1.9		
0333	332.2	2.1		
0358	357.2	2.2		
0383	382.2	2.4		
0408	407.2	2.6		
0433	432.2	2.7		
0458	457.2	2.9		
0483	482.2	3.0		
0508	507.2	3.2		
0533	532.2	3.4		
0558	557.2	3.5		
0583	582.2	3.7		
0608	607.2	3.8		
0633	632.2	4.0		
0658	657.2	4.2		
0683	682.2	4.3		
0708	707.2	4.5		
0733	732.2	4.6		
0758	757.2	4.8		

Length	Fitting length	Power consumption	Mounting Clip
Length	L	(W)	
0783	782.2	5.0	4 pcs Recommended pitch 250 to 400mm
0808	807.2	5.1	
0833	832.2	5.3	
0858	857.2	5.4	
0883	882.2	5.6	
0908	907.2	5.8	
0933	932.2	5.9	
0958	957.2	6.1	
0983	982.2	6.2	
1008	1007.2	6.4	
1033	1032.2	6.6	5 pcs Recommended pitch 315 to 375mm
1058	1057.2	6.7	
1083	1082.2	6.9	
1108	1107.2	7.0	
1133	1132.2	7.2	
1158	1157.2	7.4	
1183	1182.2	7.5	
1208	1207.2	7.7	
1233	1232.2	7.8	
1258	1257.2	8.0	
1283	1282.2	8.2	
1308	1307.2	8.3	
1333	1332.2	8.5	
1358	1357.2	8.6	
1383	1382.2	8.8	
1408	1407.2	9.0	
1433	1432.2	9.1	
1458	1457.2	9.3	
1483	1482.2	9.4	
1508	1507.2	9.6	