



# Luci RIMiT flex Indoor

## Instruction Manual

**Luci Pte. Ltd.** Singapore World HQ  
13A Bukit Pasoh Road, Singapore 089827  
TEL +65-6291-2410  
**Luci Co., Ltd.** Tokyo Japan Regional HQ  
Akasaka Bldg. 3F, 4-13-13, Akasaka, Minato-ku, Tokyo 107-0052, Japan  
Tel: +81-3-6327-7409

### ⚠ To ensure safe usage

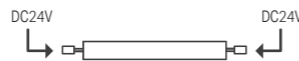
The following are the safety cautions to prevent any harm or damage to others.

**If the product is used against cautions, it may cause damage, electric shock, smoke or fire.**

#### ⊘ Only supply power through the lead wire on one side using the dedicated connection cable for this product.

Supplying power through the lead wires on both sides may cause failure and fire. If using only one **LED fixture**, insulate the **unused connector** with self-adhesive tape or **electrical tape**.

✗ Do not supply power through the lead wires on both sides.



✓ When using only one **LED fixture**.



A Certified Electrical Worker / Engineer is recommended to install



Use a DC24 V power supply. Never connect to any other power supply. Always use a circuit breaker of suitable capacity in the power supply. If the capacity is not suitable, the breaker may not work when abnormal current occurs, which may cause fire.



Always shut off the main power supply before working or inspection. Do not connect or disconnect the lead wires of the LED fixture while power is supplied.



Firmly connect the connectors. Incomplete connection may cause heating, smoke, and fire.



Do not touch the ends of the connectors. Risk of electrical shock.



Do not use the product if the cover is damaged. Risk of an accident and electrical shock.



If the product is dirty, wipe with a dry cloth. Do not use thinner, benzene, or other organic solvents to clean the product and do not wash with water.



Do not use a brush or an abrasive to polish metal parts. Risk of damage and corrosion.



Important notice for storage  
Please ensure the fixture is stored within -10°C to 55°C  
Please do not store the carton or the packages of our light fittings in the following conditions :  
- Wet location  
- Places of high humidity  
- Dusty or dirty places  
- Place that sunlight is directly exposed.  
- Places where a solvent such as a paint liquid is stored

During storing period, please do not place the cartons or individual packages vertically.

Please do not place heavy object on the carton.  
Please do not use our LED fixture as the working light during construction period.



Always test before connecting the LED fixture to a switch or dimmer.



The product must be allowed to dissipate heat. Allow sufficient space for ventilation ( heat dissipation ) between the LED fixture and building structure. Avoid installing the LED fixture close to each other. It may shorten product life or cause fire.



When there is abnormal situations, please cut off the power immediately, consult with electricians, and do not touch the lighting with bare hands.



This LED fixture is for indoor use only.  
Do not use in the following environments :  
- Outdoors  
- Location at high temperature ( +35°C or higher ) .  
( Operating temperature is 0°C to 35°C )  
- Location where water may splash onto the product.  
- Location with high humidity.  
- A dusty location.  
- Location with corrosive or inflammable gases.  
- Airtight location.  
- Location with direct exposure to salt water or organic solvents  
- Location in direct sunlight.  
- Location subject to the effects of electric or magnetic fields.  
- Location subject to intense vibration or shock,  
or a location subject to continuous vibration.



Do not do the following :  
- Forcibly remove the product after mounting it.  
- Disassemble, modify, or add holes to the product.  
- Forcibly pull or twist the product.  
- Cut or damage the power cable. Use a damaged cable.  
- Use or connect with a damage cable.  
- Do not apply pressure to the product.- Press down on the product.  
- Drop the product or subject the product to intense vibration or shock.  
- Solder the lead wire to the circuit board.

### Please read before the usage

Use the special mounting fixture to mount the LED fixture to the mounting location, and verify that the mounting is secure.

The product has been manufactured with the utmost care; however, please understand that slight deviations in LED color are unavoidable due to the characteristics of the product.

#### Caution : Must choose suitable power supply

Refer to the power supply manual for temperature, humidity and other operating conditions.

### Maintenance and Inspection

- LED fixture has a life span.
- Degradation of inner materials occurs after 8-10 years of installation even when the LED fixture looks fine from the outside. Components of the light fixture degrade due to the generation of heat when the light is on for a long time. This causes not only safety issues, but also reduces power efficiency and it is recommended to have regular maintenance and inspection.
- Cleaning and inspection should be carried out at least once every 6 months.
- At least once every 3 years, an inspection should be carried out by a specialist such as a product contractor.
- If the LED fixture is used for a long time without having an inspection, there is a small possibility that it could lead to fuming, igniting, electric shock and the like.Cleaning Method

#### Inspection Methods

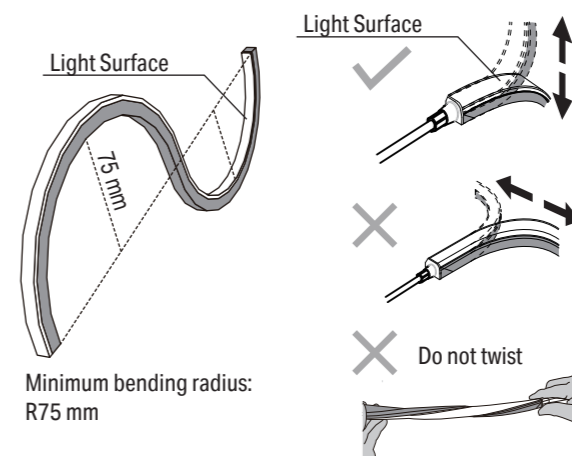
- Is LED operating normally?
- Is there any unusual smell, sound or heat?
- Are there cracks, slits, or detached parts on any part or joint?

#### Cleaning Method

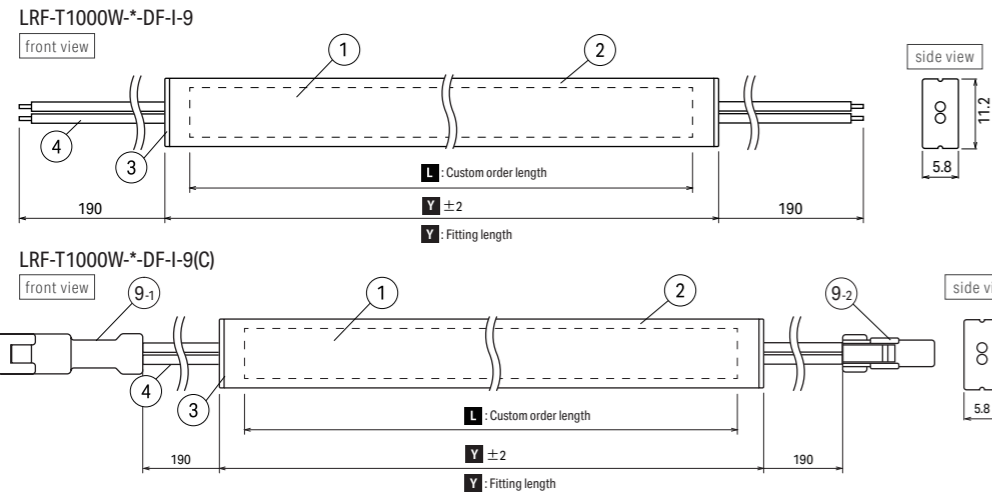
- Lightly wipe the LED fixture with a soft cloth.
- To best clean the LED fixture, wipe dirt with a soft cloth which has been soaked in a neutral detergent diluted with water and squeeze firmly. To finish off, wipe it with a damp cloth and dry it.

### Bendable direction and minimum bending radius

Caution: If LED fixture is bend in the wrong direction or over-bended duing installation work, it may damage the fixture and it may stop working.

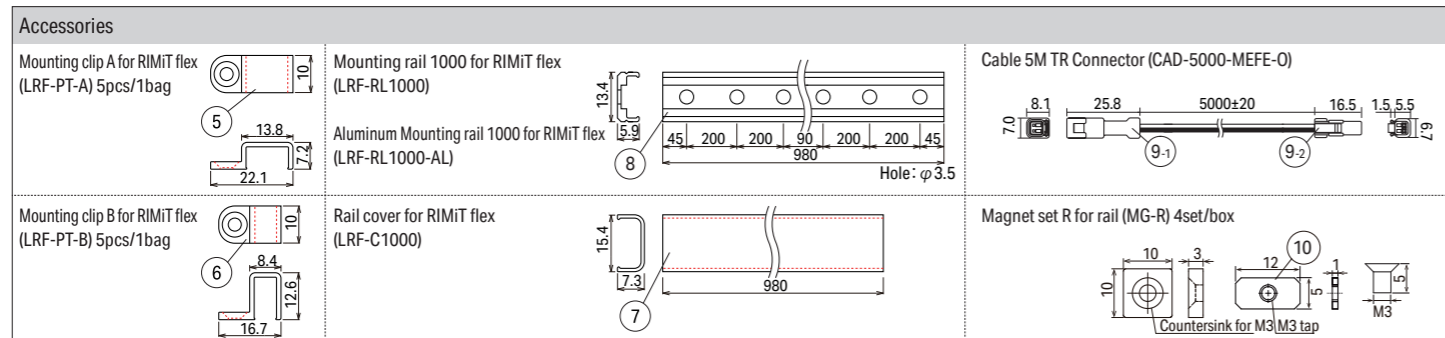
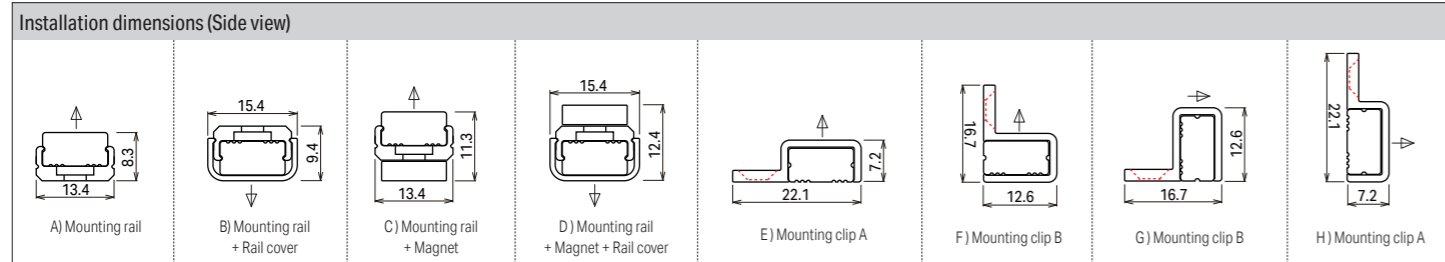


### Product specification

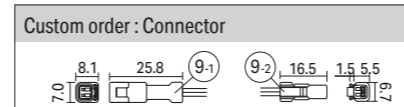
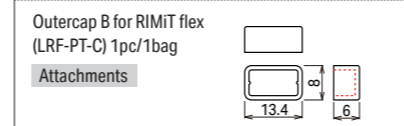


Input Voltage		
DC24V		

No.	Item name	Material etc.
①	Body	Flexible circuit board
②	Tube	Silicone, Diffuser / White
③	Cap	Silicone, Diffuser
④	Lead wire	UL1007 AWG26 Black:+ White:-
⑤	Mounting clip A	Polycarbonate, Clear
⑥	Mounting clip B	Polycarbonate, Clear
⑦	Rail cover	Polycarbonate, Clear
⑧	Mounting rail	Polycarbonate, Clear Aluminum, White
⑨	Connector	Nylon, UL94V-0, White
⑩	Magnet set	Neogium, Stainless steel, Steel Magnet, Washer, Plate, Screw



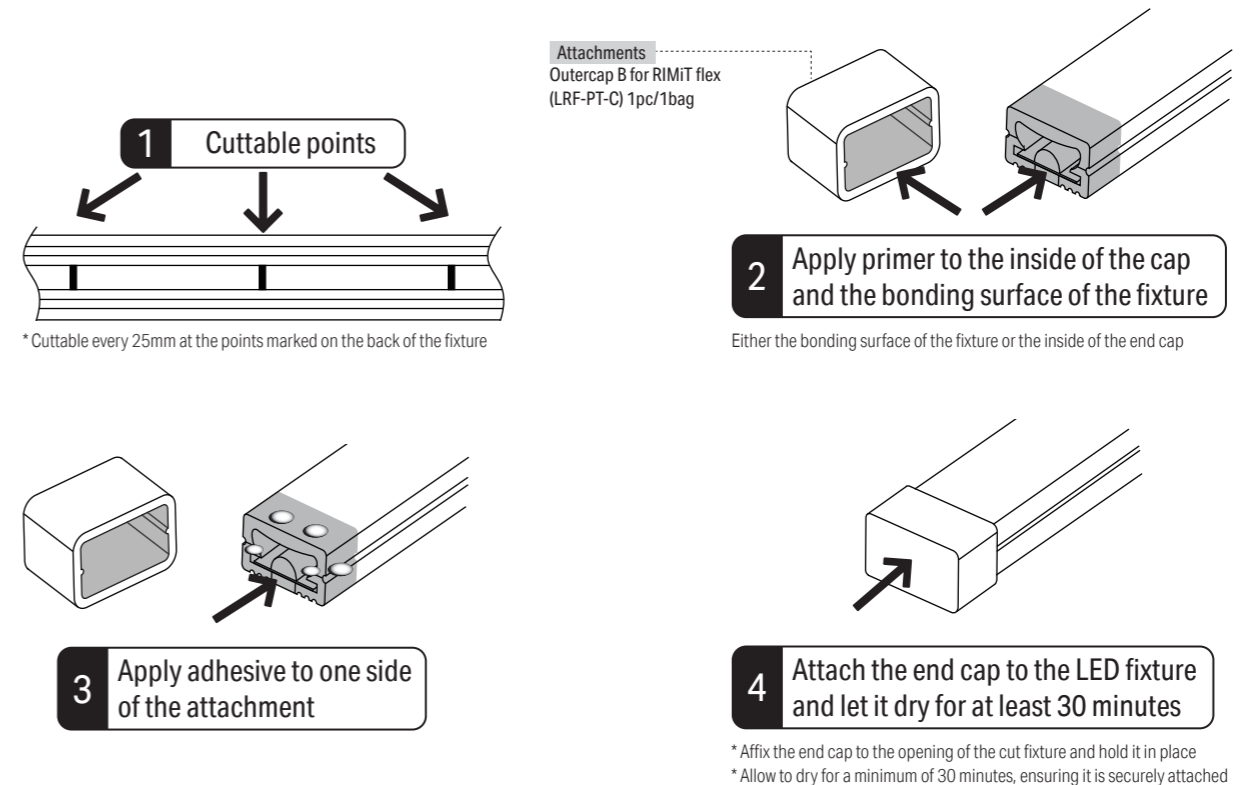
Item / Product Name	Luci RIMiT flex Indoor
Model No.	LRF-T1000-*-DF-I-9 / LRF-T1000-*-DF-I-9(C)
Wattage (Ta=25°C)	9.7 W
Input current (A/m)	404 mA (Max.)
Length (L1000)	1012 mm
Weight (L1000)	67 g / 1012mm
Number of LED	320
Max. connectable Length per run	4 m
Operating temperature	0°C to 35°C
Environment	Indoor (No Condensation)
Material	Silicone
Attachments	Outer cap 1pc
Accessories	Mounting clip, Mounting rail, Aluminum mounting rail, Rail cover, Magent set Custom order : Connector, Lead wire length
Light source color	Natural white 4100K(N), White 3400K(W), Warm white 3000K(WW), Warm white 2700K(L30), Warm white 2400K(L27), Warm white 2200K(L24)
Dimmable	Yes (0-10V, 1-10V, DMX, DALI, PWM, Casambi)



Max. connectable length per PSU	
Length of LED fixture (70% loading factor) *: split into multiple circuits	PSU
9.7 W/m	
3.6 m	50 W
7.2 m*	100 W
10.8 m*	150 W

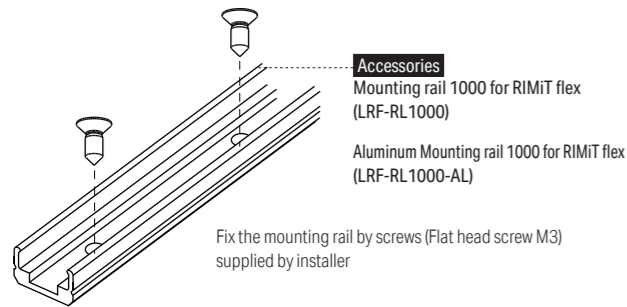
### Cutting of lamp fitting

RIMiT flex indoor version can be cut at the marks on the back of the fixture as shown in the diagram below to adjust the length.  
Cutting the LED fixture and cable of RIMiT flex IP65 at site is not allowed.



### Installing the product

#### Mounting rail

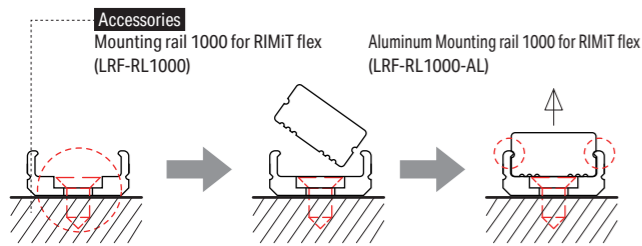


#### Caution



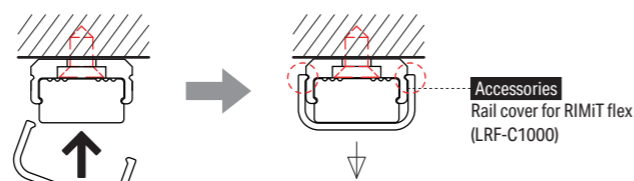
When installing the LED fixture onto the rail, avoid applying excessive pressure with fingers or tools. Excessive force may damage the circuit board and prevent the fixture to light up properly.

#### For upward installation



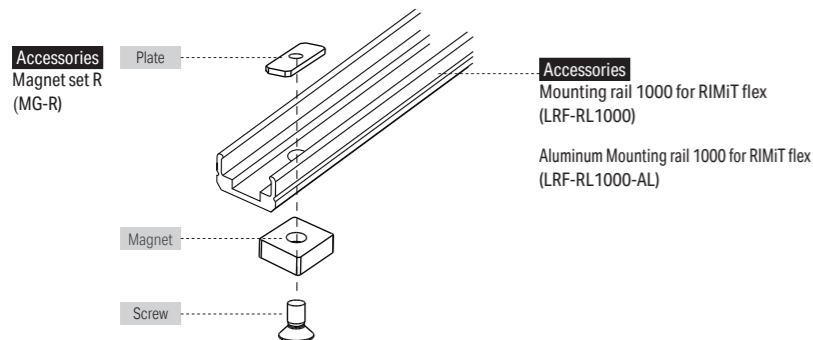
Insert the LED fixture into the mounting rail by sliding it in at an angle while pushing it. Fit the dashed circle properly.

#### For downward or vertical installation



To prevent detachment, use a rail cover. After attaching the LED fixture into the rail, insert the rail cover at an angle while gently spreading it open. Ensure the dashed circle is hooked.

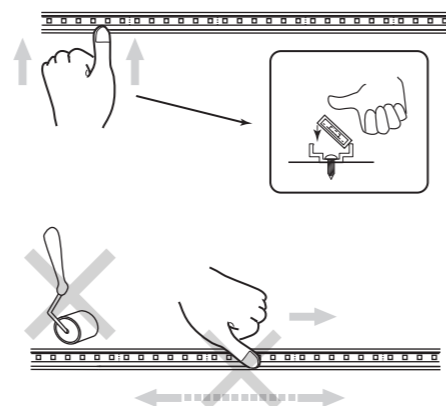
#### Installing magnet to Mounting rail



#### Important Instructions for Installing and Removing LED Fixtures

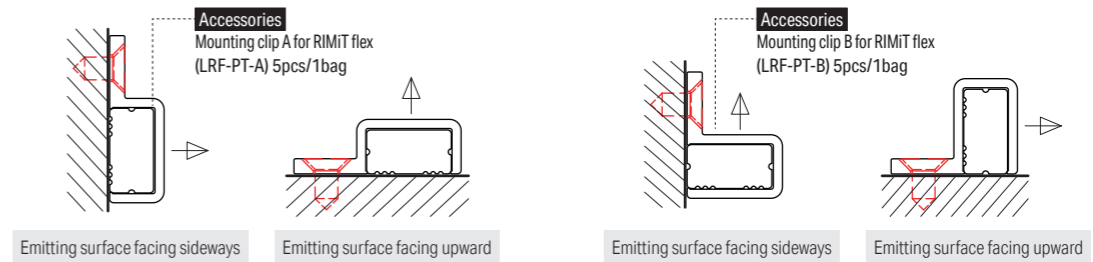
- Do not forcefully slide the LED fixtures along the rail.  
Prolonged pulling force on the fixture can cause issues such as circuit board damage and lighting failure.

1. Insert the LED fixture into the mounting rail at an angle (\*Note 1\*).
2. Press the side of the LED fixture downward into the rail using your thumb.
3. Do not use a roller or other tool to install the LED fixture into the rail while pulling in the longitudinal direction.
4. Do not apply pressure to the lighting surface as the tube is made of soft material.
5. When removing the LED fixture from the rail, insert your fingers between the rail and the fixture and gently lift it away.



#### Installing Mounting clip

For curved installations or where it is difficult to use a Mounting rail



Fix the LED fixture with Mounting clips and screws (Flat head screws M3) supplied by installer

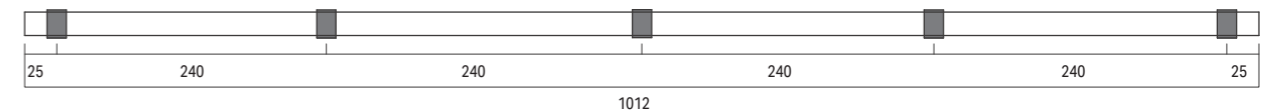
\* If a part of the lighting fixture sags or deforms, use more clips.

\* Do not use mounting clips A or B when installing the lighting fixture with the light-emitting surface facing downward to avoid sagging, deformation, or malfunction of the fixture.

#### Recommended position of Mounting clip A and Mounting clip B

Recommended mounting position (pitch: 20mm to 240mm, quantity: 2 to 5 pieces) depends on the length of the LED fixture.

Example  
Length 1000





# Luci RIMiT flex Indoor

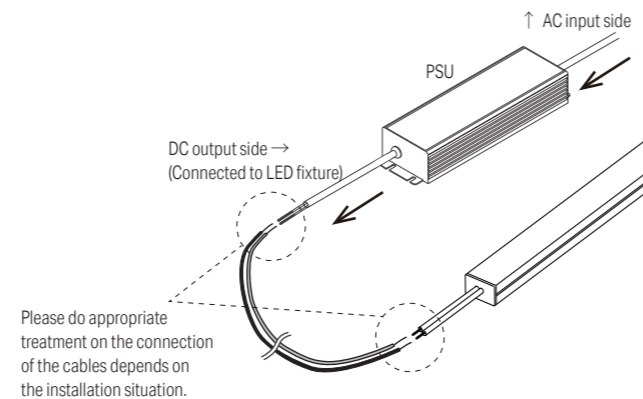
## Instruction Manual

### Connecting to the power supply

#### Caution : Must choose suitable power supply

- Cables used for connecting LED fixtures and Power supply must be a suitable type and gauge.
- Cables should be joined with suitable terminal block or methods as appropriate to the installation and operating environment.
- Caution: When using a long cable with thin dimension, the resistance of cable will increase. Voltage drop and heat dispatching may occur and result in a drop in brightness.
- Caution: When separating one cable to multiple circuits in the same gauge, the current loading focuses on the junction of the branch circuit and high temperature will liberate on there. Please consider the loading of the power supply (quantity of LED fixture) and review the wiring system to avoid the above problem.
- When connecting the dimmer driver with power supply, unpredicted noise might occur. It is a characteristic of electronic devices, not a malfunction of the LED fixture. Please choose an appropriate power supply and consider to have enough space to install. Reducing the loading factor of LED fixture might improve the noise from the power supply while the noise for the LED fixtures might be improved by splitting the circuit of LED fixtures into multiple.
- When you adjust the length of the power supply cable, please be careful not to damage the core wire.
- When the cable is bundled, heat dissipation becomes poor and the temperature becomes extremely high. When bundling 5 cables or more, connect less number of LED fixture for one cable.

Refer to the power supply manual for temperature, humidity and other operating conditions.



### System configuration diagram

