

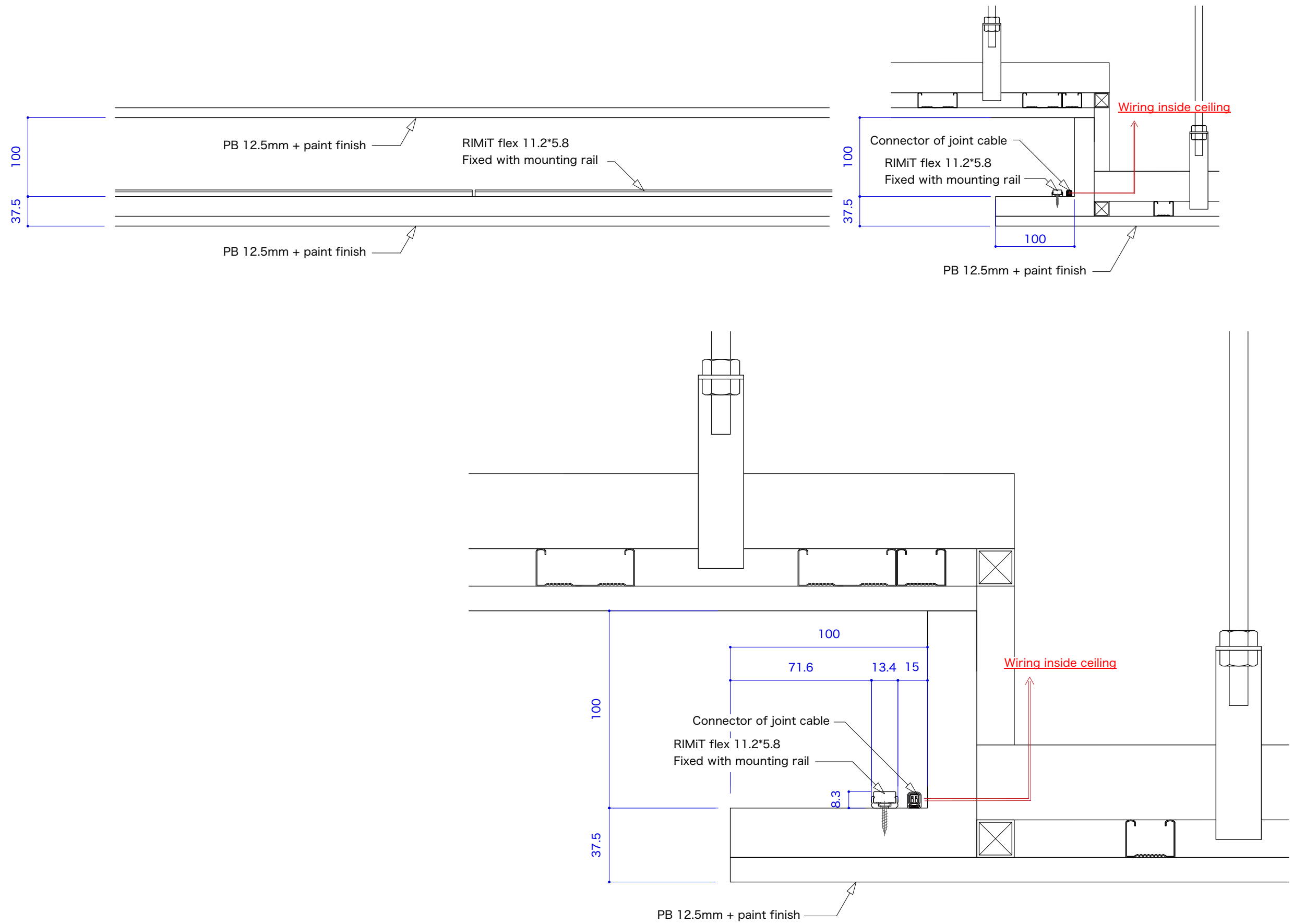
【Coved Ceiling Lighting】

Drawing reference for fixture installation

S=1/5, 1/2 (A3)

Benefits:

- Featuring a dotless design and soft light distribution, this lighting fixture is unobtrusive even when the fixture is visible in coves without fascia.
- Proving even and beautiful line elements for ceiling designs and area separation.

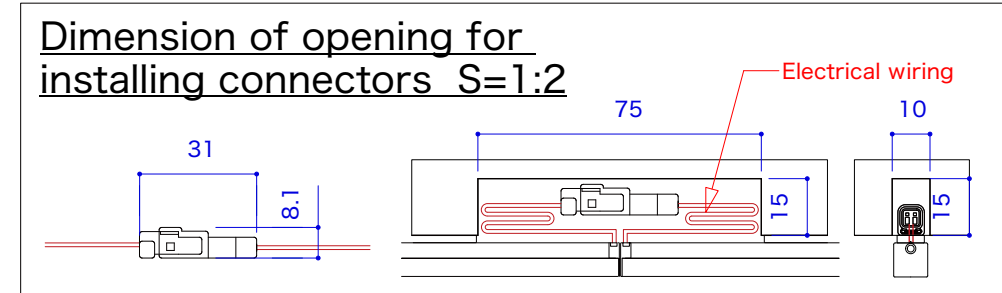
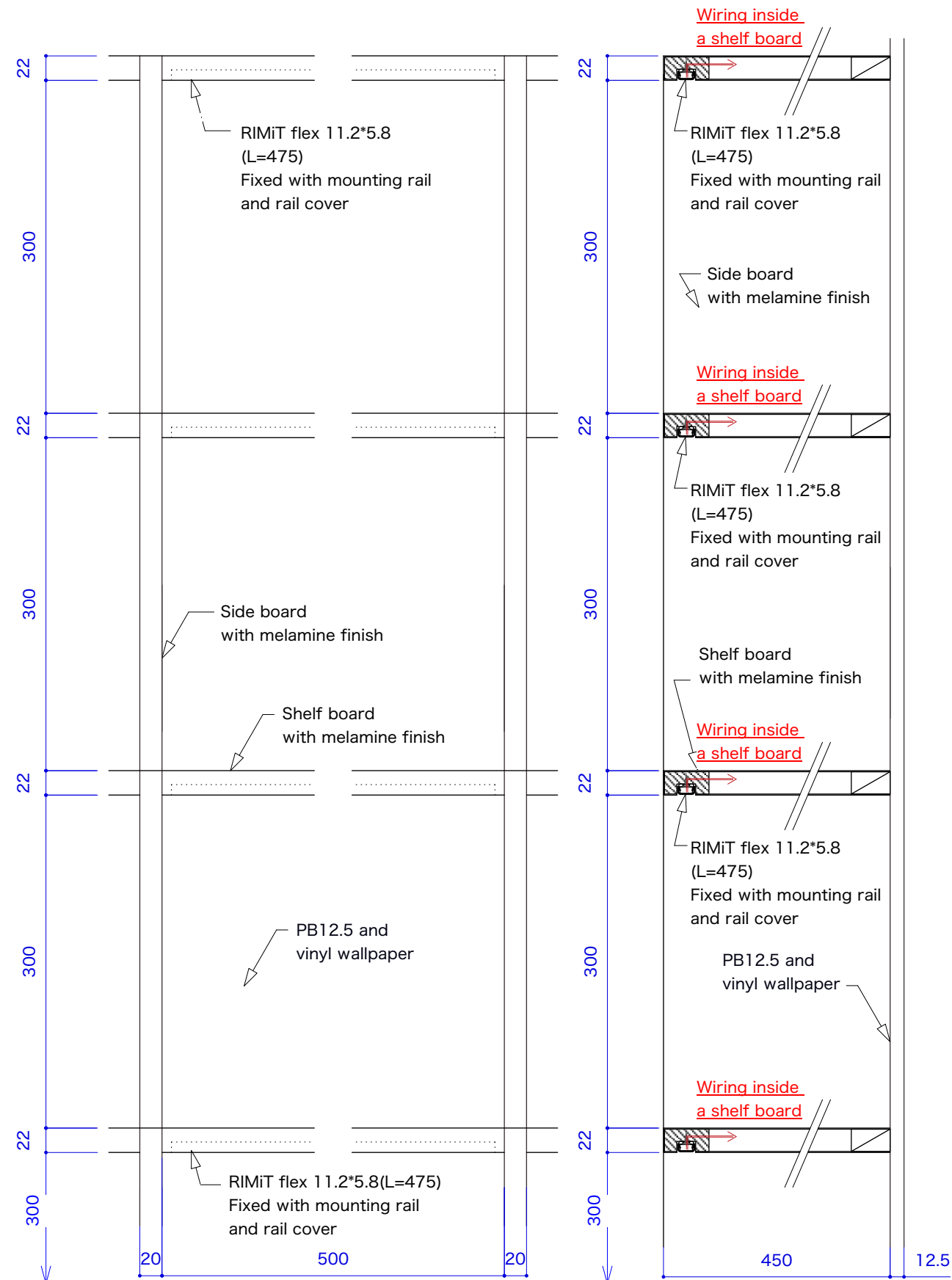


【Recessed shelf lighting】

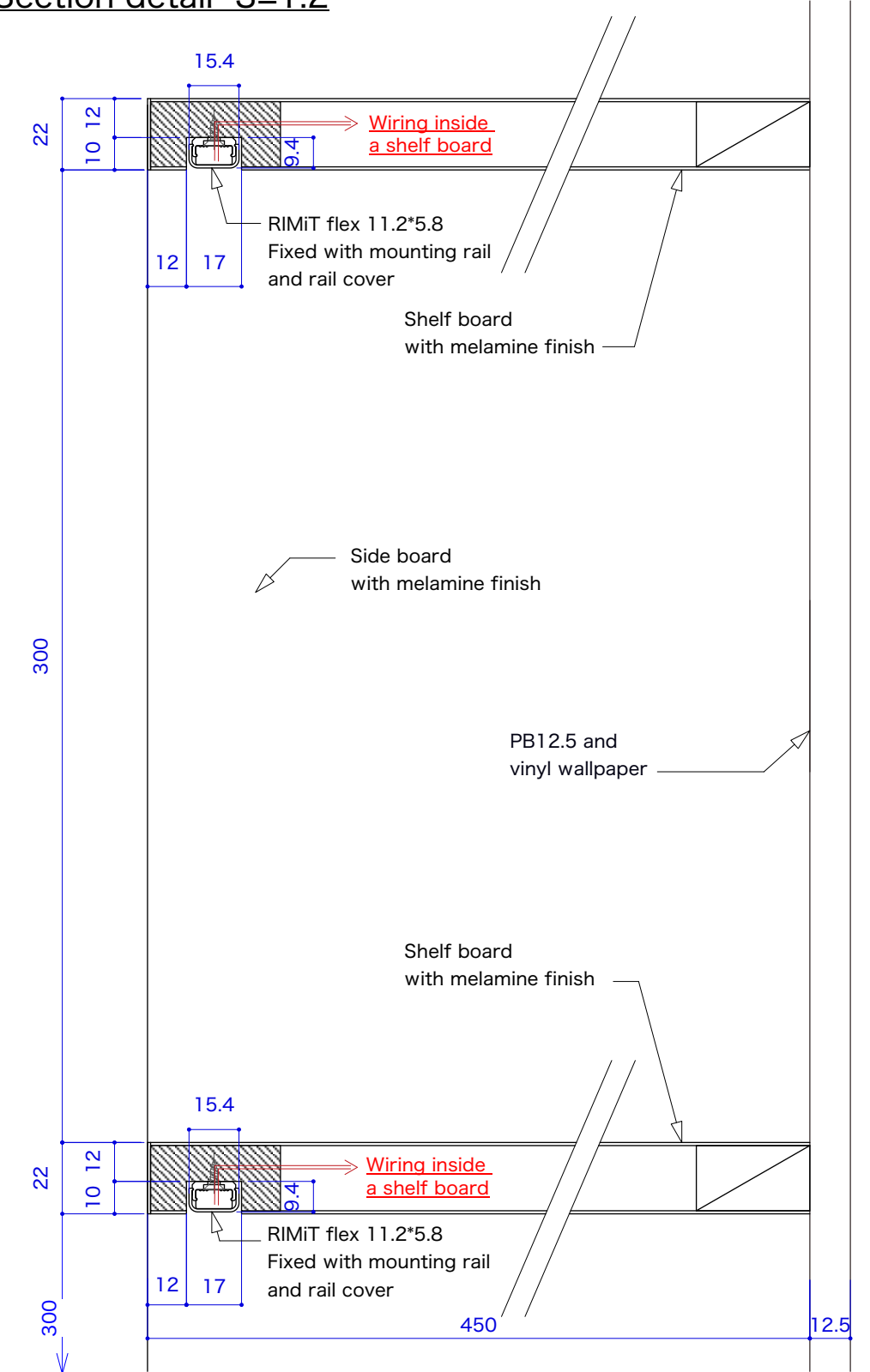
Drawing reference for fixture installation

S=1/5, 1/2 (A3)

- Benefits:
- Compact, discreet luminaire designed for easy installation and maximum space efficiency.
 - The lighting fixtures are cuttable on-site in 25mm increments, allowing them to be tailored to fit perfectly into the shelf.
 - Enhancing the attractiveness of products on display with high-color rendering lighting.



Section detail S=1:2

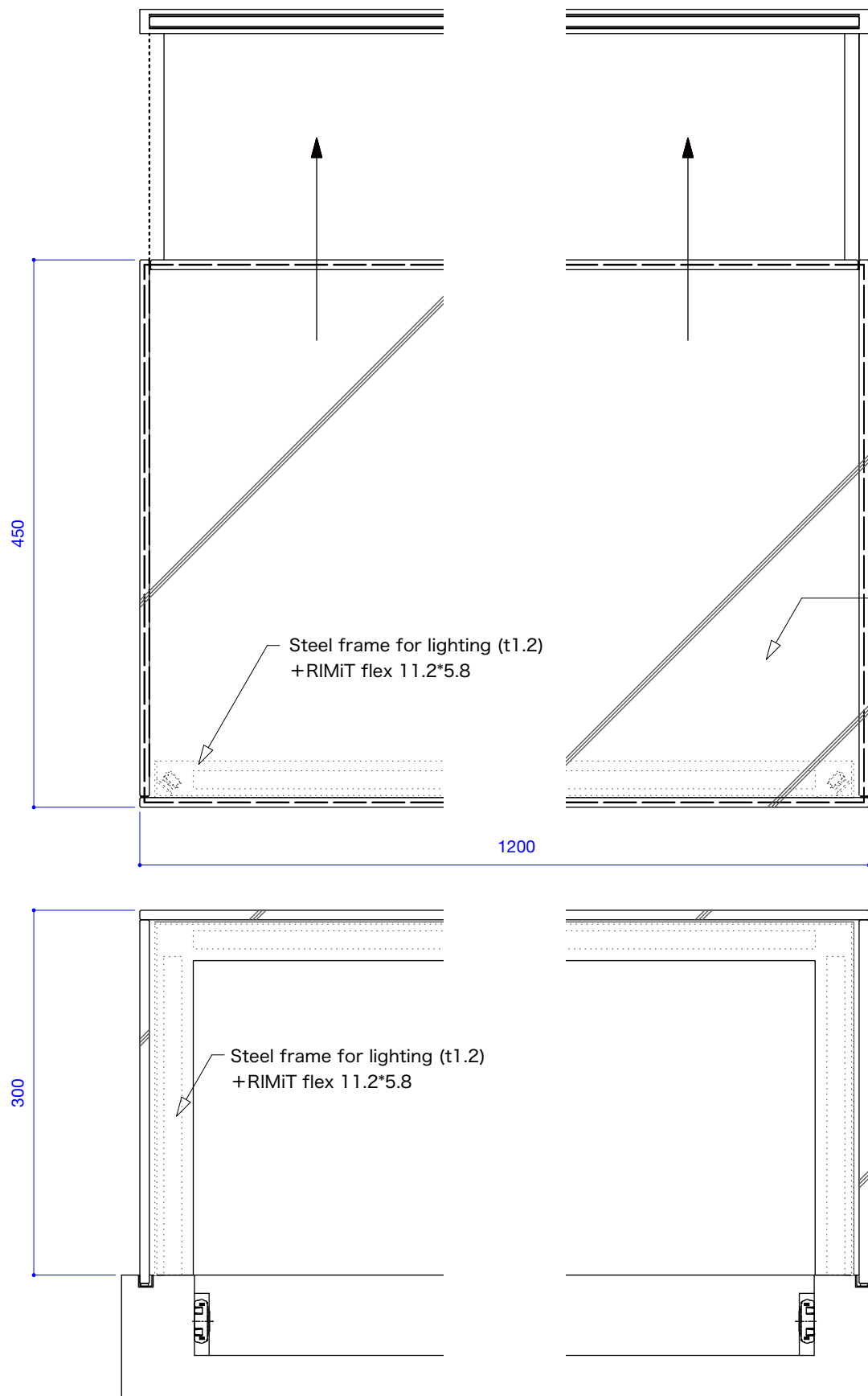




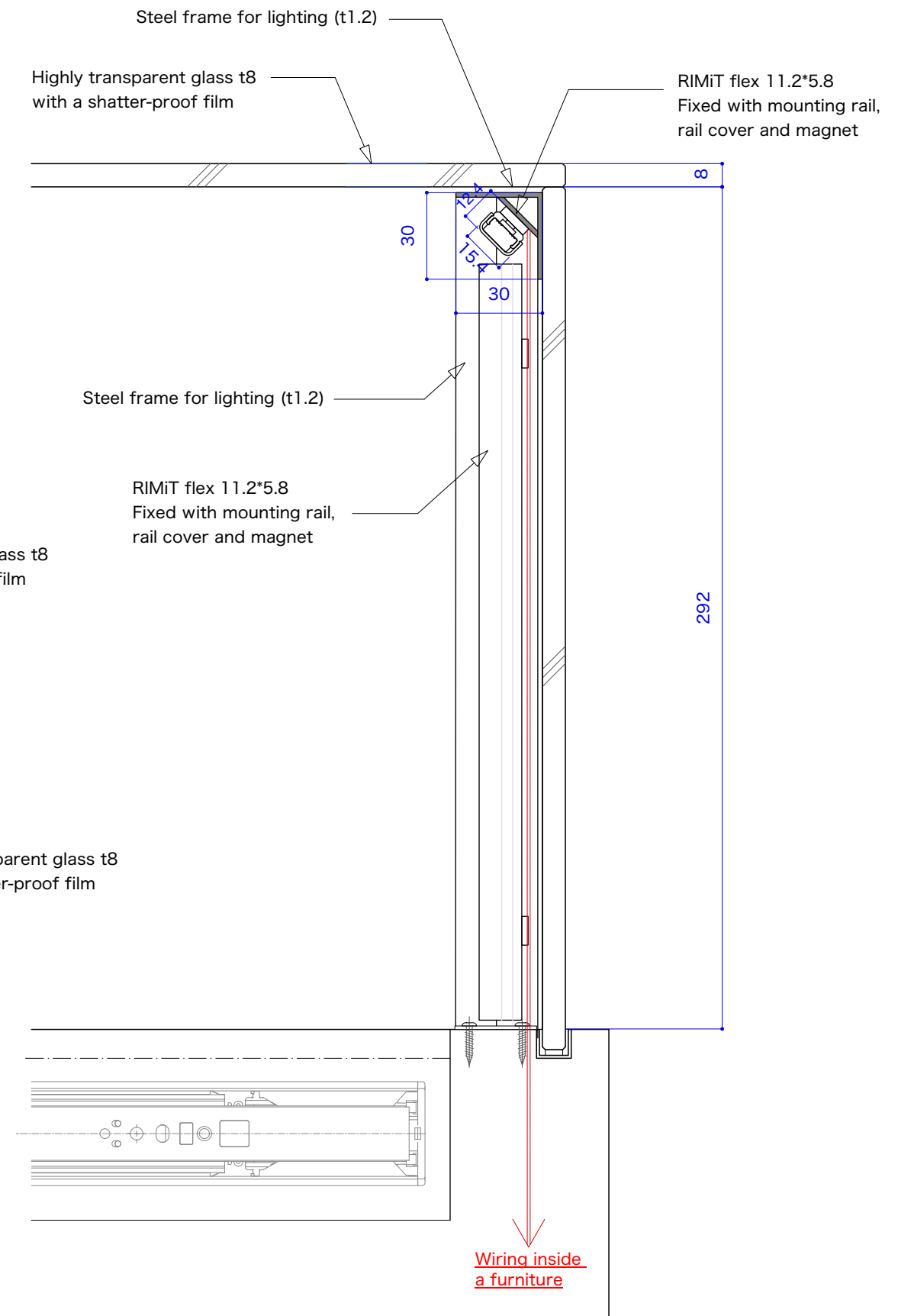
【Showcase Lighting】

Drawing reference for fixture installation S=1/5, 1/2 (A3)

- Benefits:
- Extended length customizable up to 4m, providing seamless and uniform illumination for longer showcases.
 - Incorporating striking visual elements to enhance both the showcases and the featured products.
 - Effortless installation with magnet for complicated showcase designs.



Section detail S=1:2



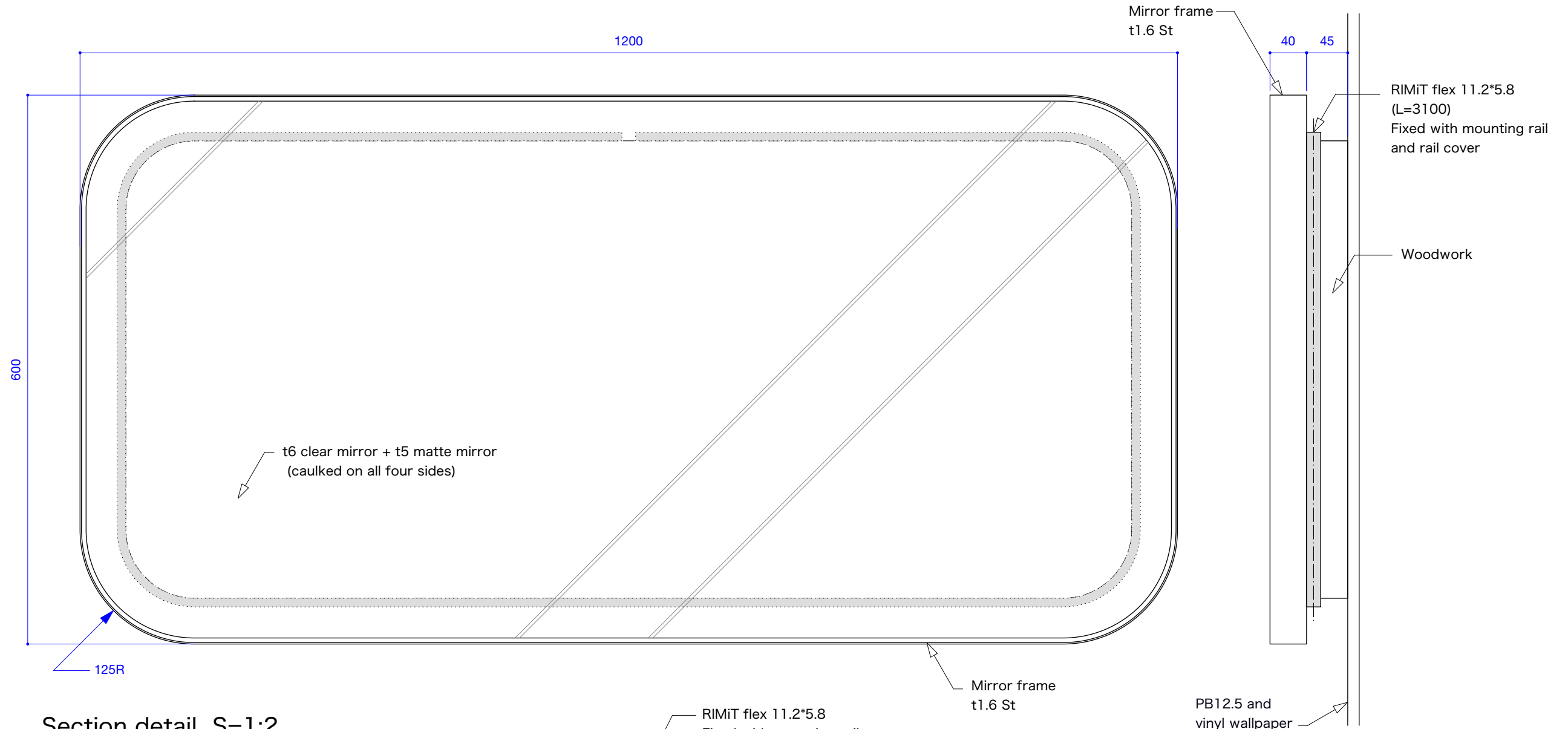
【Mirror Back Lighting】

Drawing reference for fixture installation

S=1/5, 1/2 (A3)

Benefits:

- Compact, discreet luminaire designed for easy installation and maximum space efficiency.
- Length customizable up to 4m, providing indirect lighting for design of extended length.
- The LED fixture is bentable, enabling it to conform seamlessly to the curve of a mirror and giving it an aesthetic appeal.



Section detail S=1:2

