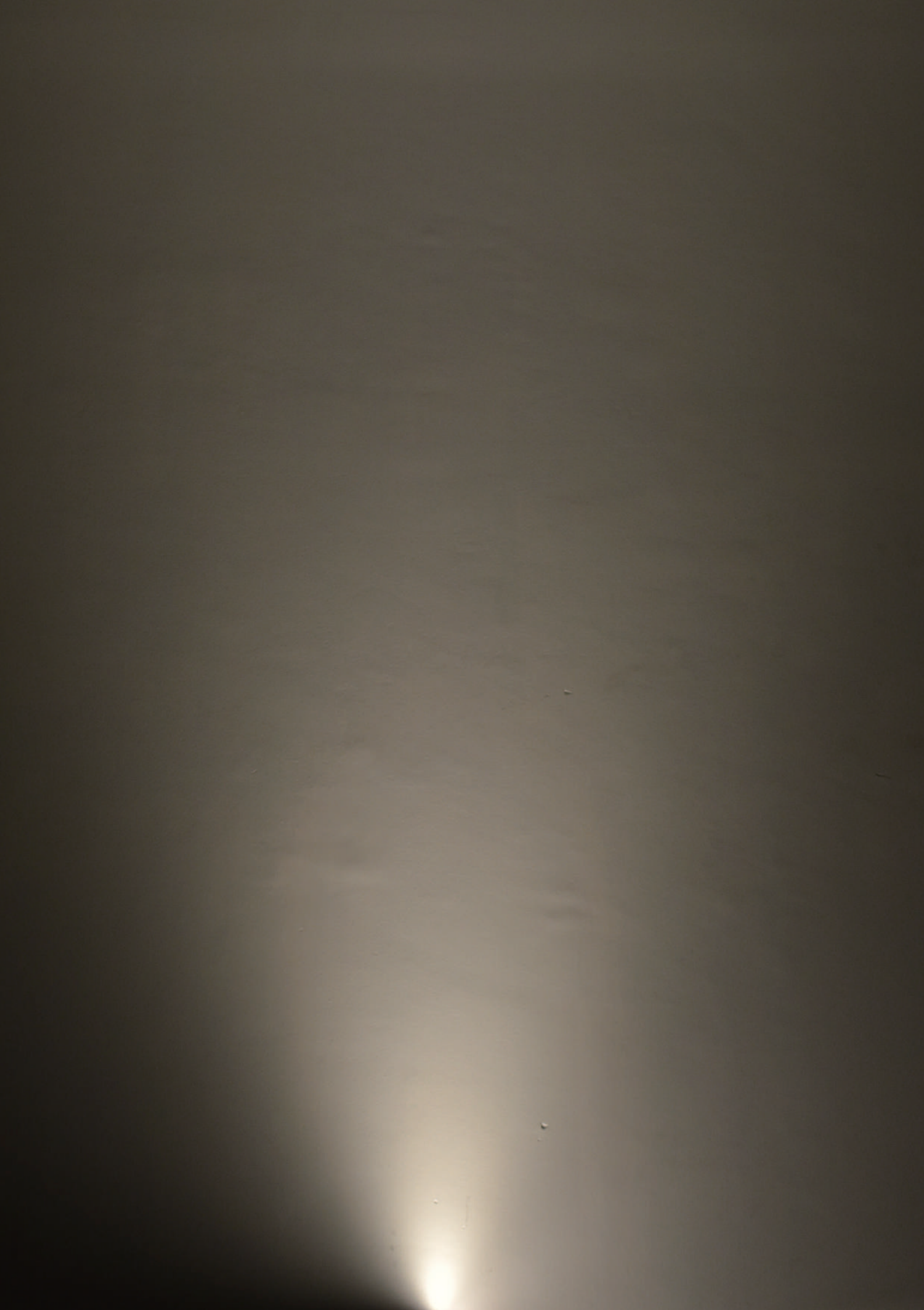




Silent power. Infinite design.

KIWA fuga™



KIWA fuga™

Bold and Elegant Creativity Woven by Dual Light Sources

By integrating the "OpiFlow Array™" with a high-power surface light source, we have revolutionized the possibilities of grazing illumination. The name "Fuga" draws inspiration from the musical concept where a single theme evolves and overlaps to create magnificent harmony. Similarly, KIWA fuga offers light that transits seamlessly from a shadowless, rich glow of light near the fixture to a smooth, far-reaching gradient that creates a visual melody flowing throughout space. Its powerful yet graceful illumination unlocks new levels of creativity, empowering bold and sophisticated designs in expansive environments.

KIWA fuga™

A spectacular display of light that goes beyond all limits. Where powerful brightness combines with delicate details, adding elegancy to large spaces.

A harmony of gentle radiance spreads across the surroundings, while a power beam of light shines brightly on the walls

Powered by proprietary "Optiflow Array™" technology and precision optics, it creates a flawless light gradation across all outputs—from the ultra-efficient 2W/m to the high-performance 34W/m. Rich, diffused light thoroughly fills the area near the fixture to eliminate multiple shadows, while seamless grazing light adds depth to the space. From 2W to 34W, it traces a consistent, seamless lineage of light.



Ingenious parallel arrangement: a subtle gradation where shadows seamlessly fade away.

At the heart of KIWA fuga lies a unique double-line structure, integrating twin rows of LEDs into an ultra-slim 29×42.5mm profile. This original design harmonizes two distinct characters of light: a precision lens line for grazing and a dot-less diffusion line for shadowless illumination. By layering these elements, the light decay is rendered with exceptional subtlety. The result is a delicate gradation of luminous power, where the boundaries of shadow gracefully dissolve into a harmonious glow.



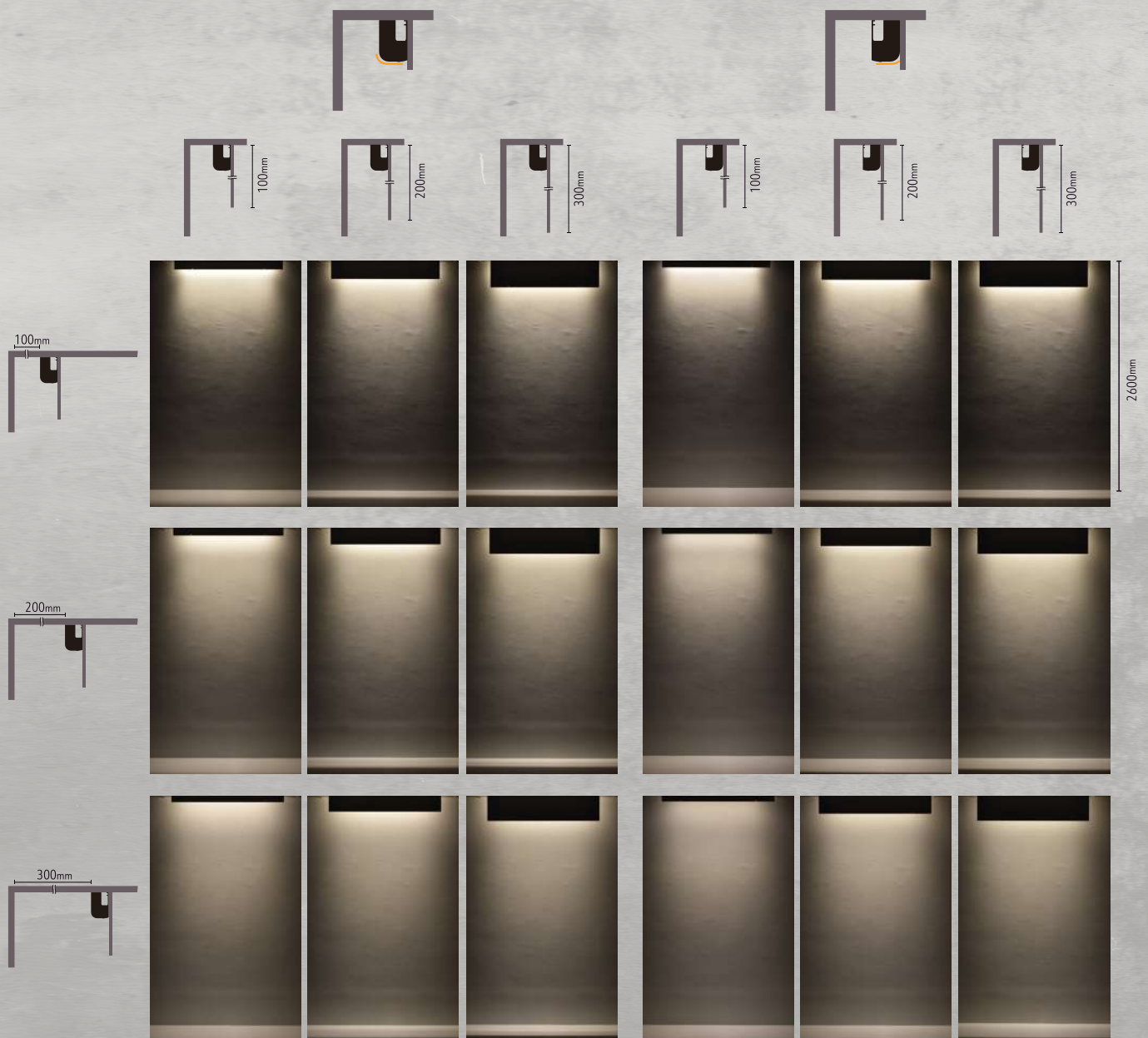
Unleashing the potential of grand light design with an impressive 3,800 lm/m.

Even on the dynamic scale of public atriums or grand hotel lobbies, its performance remains unparalleled. Delivering an impressive output of up to 3,800 lm/m, it acts as a masterful wall washer, coating vast surfaces in flawless, uniform light. Yet, this power is balanced by an exceptional luminous efficacy of up to 118 lm/W. Even in projects with the most stringent environmental regulations, it brings profound silence, depth, and a timeless dignity—without ever compromising on aesthetic brilliance.



KIWA fuga™

Verification results 25°, 34W/m, 2700K



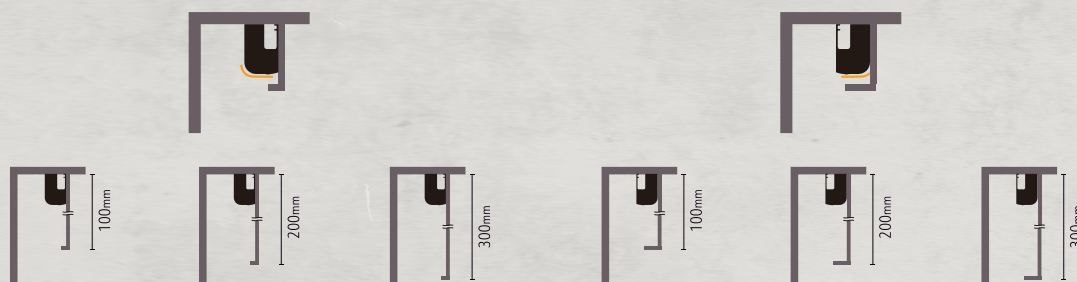
KIWA fuga™

Verification results 40°, 34W/m, 2700K



KIWA fuga™

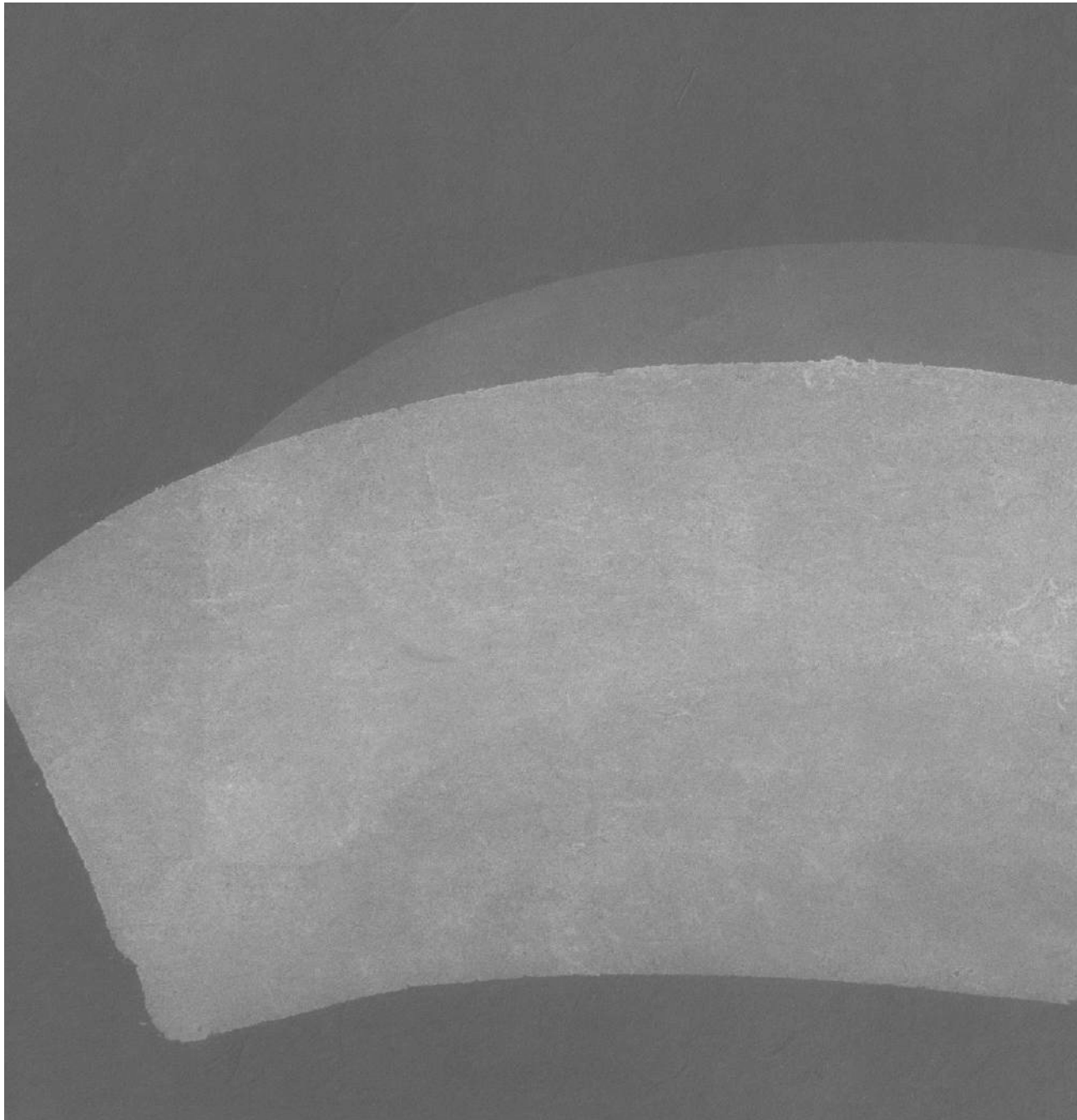
Verification results 25°, 34W/m, 2700K



KIWA fuga™

Verification results 40°, 34W/m, 2700K





Luci Pte. Ltd.

Singapore Regional HQ
52A Tanjong Pagar Road, Singapore 088473
Tel: +65-6291-2410 E-mail: info@luci.co.jp

Hong Kong Marketing Office
Unit 601-02, 6/F Union Park Tower, 168 Electric Road, Fortress Hill, Hong Kong
Tel: +852-2219-8462 E-mail: info@luci.co.jp

<https://www.luci.co.jp/led/en/>

