



Luci Flat FLEX F Indoor

10mm pitch
16mm pitch

Instruction Manual

Luci Pte. Ltd. Singapore World HQ
52A Tanjong Pagar Road, Singapore 088473
Tel: +65-6291-2410

Luci Co., Ltd. Tokyo Japan Regional HQ
Akasaka Bldg. 4F, 4-13-13, Akasaka, Minato-ku,
Tokyo 107-0052, Japan
Tel: +81-3-6327-7409 Fax: +81-3-6327-7410

Safety Cautions

The following is the safety cautions to prevent any harms or damages to others.
If the product is used against cautions, it may cause damage, electric shock, smoke, or fire.



Electrical work certificate is needed to install and inspect this product.
Please ask electrician for the installation.



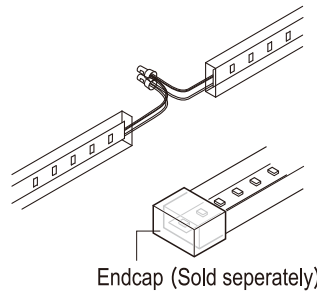
Please use DC24V power supply.
Do not use other power supplies such as AC220~240V.



Please turn off all the powers when installation and inspection.
Do not connect or disconnect the lead wires with its power on.



If the charges are in wrong direction,
electric resistances will become
hot and lighting will be destroyed.
Please connect the lead wires
with same color and insulate
with sleeve-insulation tape
shrinkage tube.



Do not place a flammable object such as a cloth or a paper or an insulating
material on top of the fixture or cover it with such a material. It may cause
the LED fixture not to turn on or fire.

Do not put a piece of metal or a flammable in clearance of the LED fixture.

Do not place or install LED fixture in close contact with other electric equipment
in or out of ceiling area to prevent fall, electric shock or fire caused by vibration
from electric equipment.



Important notice for storage

Observe the storing temperature of our LED fixtures: 0 °C to 55°C
Please do not store the carton or the packages of our LED fixtures
in the following conditions:

- wet location- places of high humidity
- places with much litter or dust
- places exposed to sun light directly
- places with solvent such as a paint liquid is stored or volatile materials are volatilized.

During storing period, please do not put the cartons or individual packages vertically.
Please do not open individual package until just before installing LED fixtures
to avoid any damage to the LED fixtures.

Please do not place heavy object on the carton.
Please do not use our LED fixtures as the working light during construction period.



When this product is cut, please use endcaps to ensure
proper protection of the LED fixture against dirt and moist.



This product is indoor use only.
Do not use in the following environments:

- A location at high temperature(≥35°C or higher)
(usage environment temperature is 0°C to +35°C).
- A location with high humidity.
- A dusty location.
- A location with corrosive or inflammable gasses.
- A location where the product is exposed to direct sunlight.
- A highly airtight location.
- A location where the product is directly exposed to salt water or
organic solvents.
- A location subject to the effects of electric or magnetic fields.
- A location subject to intense vibration or shock, or a location
subject to continuous vibration.



Please do not do the followings to the product.

- Cut where there is no cut-mark
- Decompose or modify
- Pull or twist strongly
- Push strongly
- Bend more than the max angle(R50mm)



When there is abnormal situations, please cut off the power
immediately, consult with electricians, and do not touch
the LED fixture with hands.

Please read before the usage

- For safety, do not directly view the LED light source.
- The minimum allowable bend range of this lamp fitting is R 50 mm.
This means that the lamp fitting can be bent at most to a circle of diameter 100 mm.
See the illustration in the lower right.
- When the air temperature is low, the lamp fitting may become stiff.
Forcibly bending the fitting may cause damage. In this situation, it is recommended that you connect the lamp fitting to the power supply, turn on the light, wait until it warms
up, and then bend.
- When handling the product, take care not to bend or twist it.
This may cause malfunctioning. When mounting on a ceiling, under a shelf, or on a wall, mount tightly with no looseness or sagging.
- Use a mounting rail (option) to mount the lamp fitting in the mounting position.
- To mount the mounting rail in the mounting position, use mounting clips (option) and screws (commercially available).
- If you are using an instantaneous adhesive agent, wipe off all dust, moisture, and oil from the mounting rail and mounting surface.
Dirt on the surfaces to be glued may cause the mounting rails to detach.
- The product has been manufactured with the utmost care;
however, please understand that slight deviations in LED color are unavoidable due to the characteristics of the product.

Maintenance and Inspection


- LED fixture has a life span.
- Degradation occurs inside after 8-10 years of installation even when the LED fixture looks fine from the outside.
Parts of the LED fixture degrade due to heat when the light is on for a long time. This causes not only safety
issues, but also reduces power efficiency and it is recommended to have regular maintenance and inspection.
- Cleaning and inspection should be performed at least once every 6 months.
- Inspection by a specialist, such as a product contractor, should be performed at least once every 3 years.
- If the LED fixture is used for a long time without having an inspection, there a small possibility that it could lead to
smoke, fire, electric shock.

Inspection Methods

- Is LED operating normally?
- Is there any unusual smell, sound or heat?
- Are there any cracks, splits, or detached parts on any parts or joints?

Cleaning Method

- Wipe the LED fixture lightly with a soft cloth.
- To best clean the LED fixture, wipe dirt with a soft cloth with has been soaked in a neutral detergent diluted with
water squeegeed dry. To finish off, wipe it with a damp cloth and dry it.

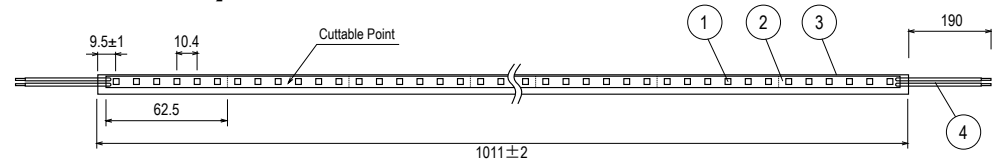
**This product cannot be
bent less than this angle** 

Product specifications

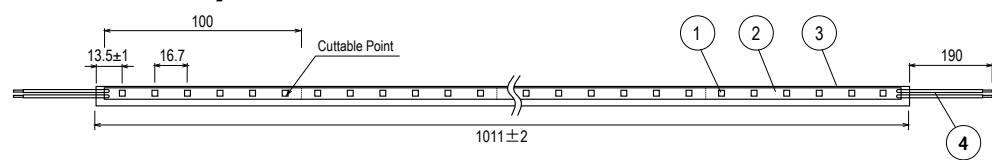
※unit of measure=mm

Front view

【LFTF10-1000-※-CL/DF-I】



【LFTF16-1000-※-CL/DF-I】



Side view



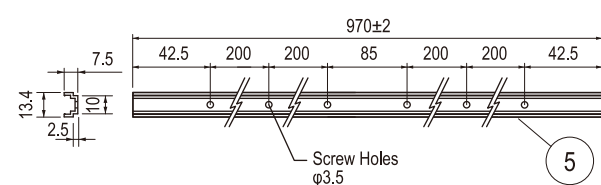
Input voltage

DC24V

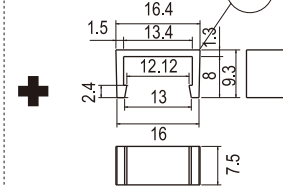
#	Item	Name Materials etc.
①	LED	SMD type
②	Tape Substrate	FPC
③	Body	Flexible Acrylic, Clear
④	Lead Wire	Black+, White
⑤	Mounting rail	AES
⑥	End cap	Polycarbonate, Clear
⑦	Mounting clip for rail	Polycarbonate, Clear
⑧	Mounting clip	Polycarbonate, Clear

Option parts

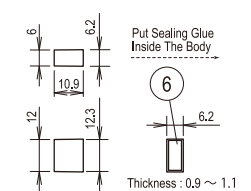
Mounting rail 1000 (LFT-RL1000)



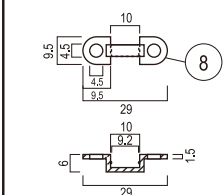
Mounting clip for rail
5pcs / 1bag



End cap (LFX-EC) (10pcs / 1bag)
(2pcs attached upon request)



Mounting clip (LFT-RC)
10pcs / 1bag



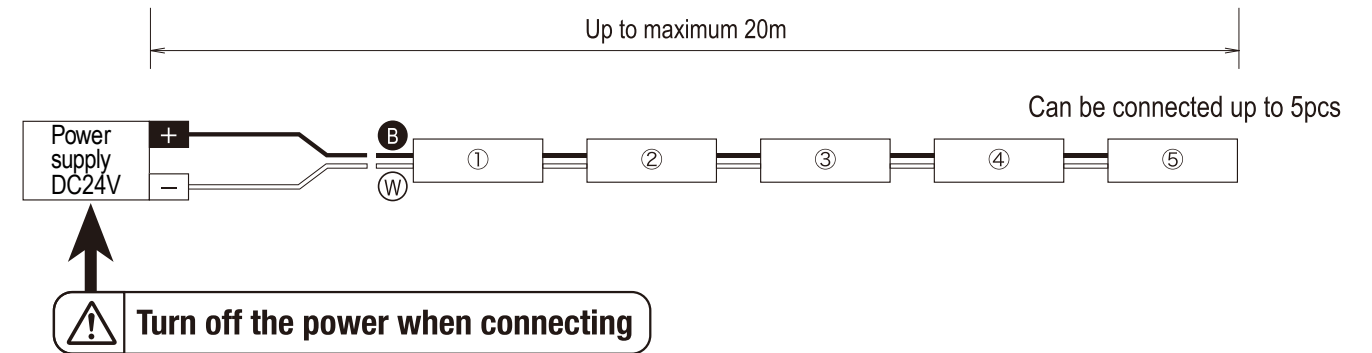
Cables

Recommended : VCTF-2C 0.75sq
※Cables are not included

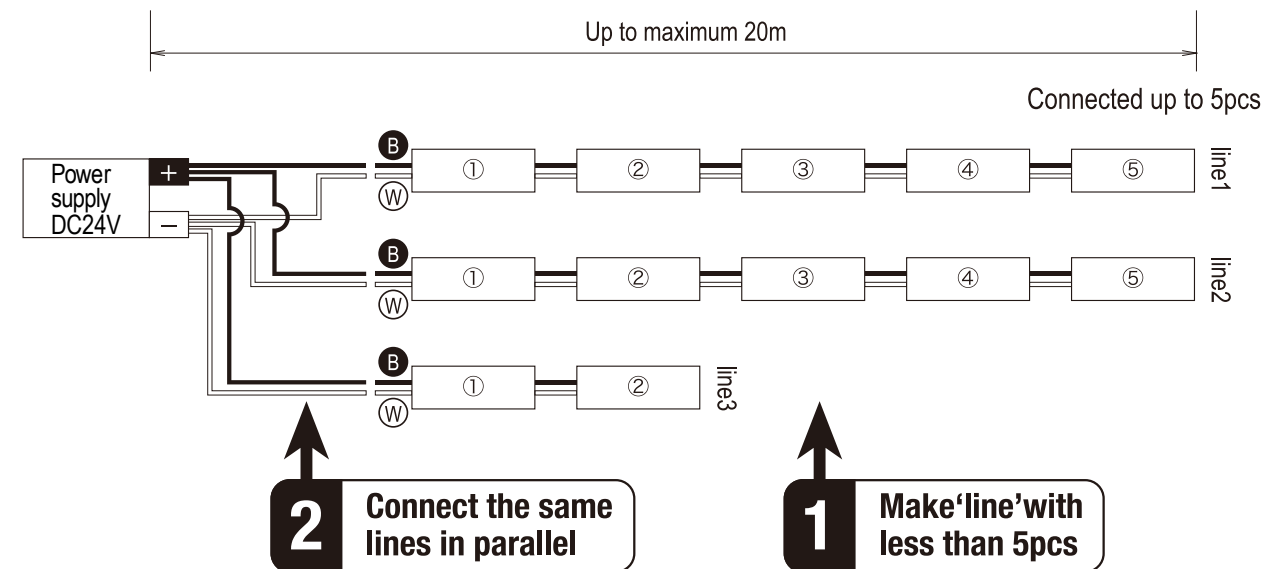
Power supply		
Use appropriate power supply. Max connectable Unit : Max 5pcs (5m)		
3.9W/ m	2.5W/ m	Output
~9	~14	50W
~18	~28	100W
~27	~42	150W

Connecting lamp fittings

For 5 devices or less



For 6 devices or more



※Amount of the connecting device depends on the power output(W).

※Luci Flat FLEX F can be connected up to 5pcs. The max distance between the power to the last device is 20m.

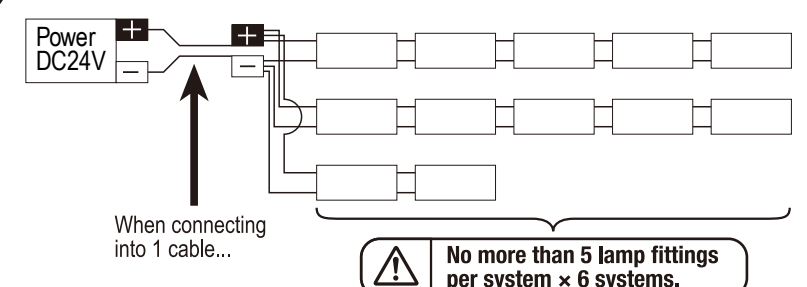
※Divide into multiple lines when the amount exceeds more than the max connectable units.

Item / Product Name	Luci Flat FLEX F	
LED pitch	10mm pitch	16mm pitch
	3.9W	2.5W
	Indoor	Indoor
Model No.	LFTF10-1000-※-CL/DF-I	LFTF16-1000-※-CL/DF-I
Power consumption	3.9W/ m	2.5W/ m
Input current	192mA (max)	120mA (max)
Number of LEDs	96 LED	60 LED
Weight	40 g	40 g
Environment	Indoors (No Condensation)	
Operating temperature	0°C ~ +35°C (No Condensation)	
Max. sets connectable	5m	
Material (Body)	Soft Acrylic	
Min. allowable bend range	R50mm	
Accessories	End cap x2 (※upon request)	
Option parts	Mounting rail, Mounting clip, End cap, Sealing glue, Instant glue for mounting	
Light source color (※)	Day light, Natural light, White, Warm white 3000K(L30), Warm white 2700K(L27), Warm white 2400K(L24), Warm white 1900K(L19)	
Dimmable	○	

Cautions

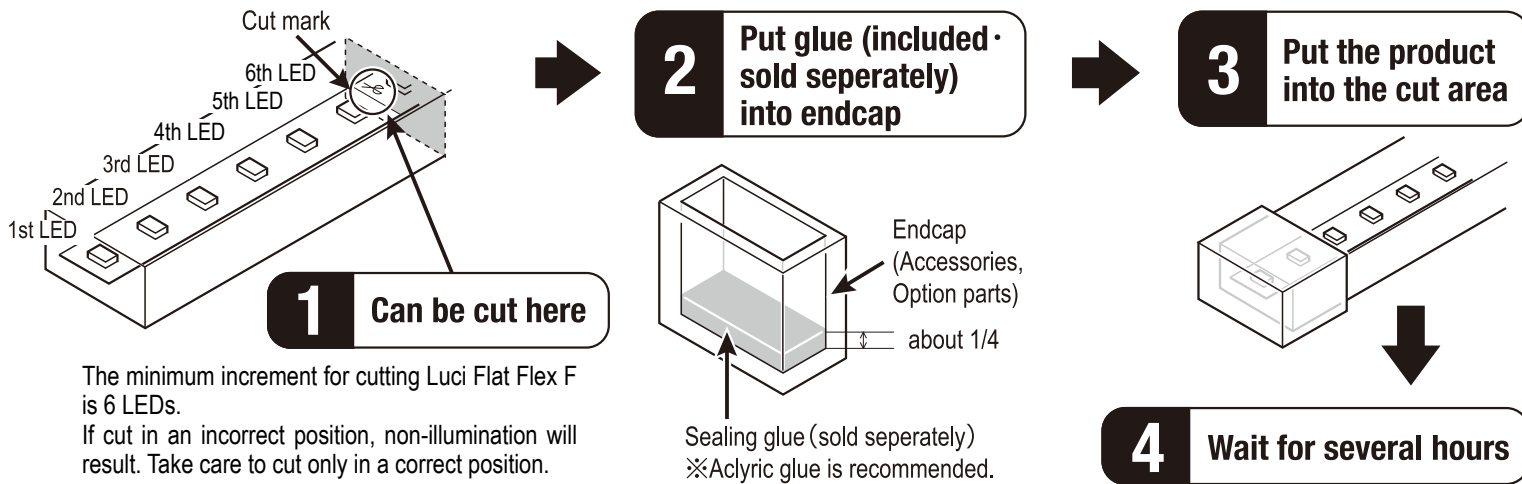
• It is recommended to connect directly same lines. (diagram above)

• When connecting multiple lines into one, please connect less than 5 pcs*6 lines. (right diagram)



Cutting of lamp fitting

The lamp fitting can be shortened by cutting in increments of 6 LEDs.

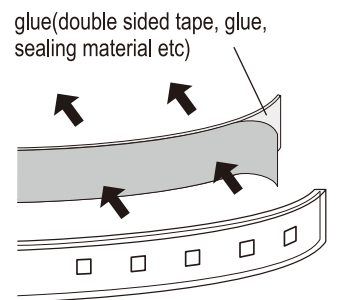


Installing the product

Usage when flexed

Mounting with glue

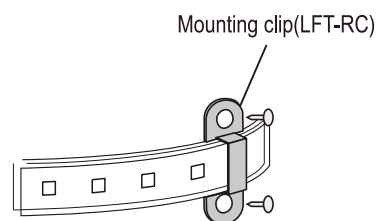
Use glue to mount the product when screws cannot be used.



※Acrylic materials are recommended for glue

Screw fixing

Mounting clip have screw holes so use them to fix the product.



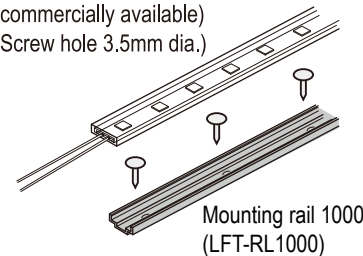
Fix with screws(offered commercially)
(Screw diameter 4.5mm)

Direct usage when flexed

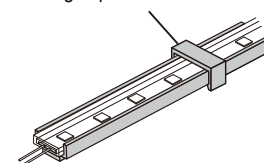
Mounting with screws

Fix with mounting rail or clip, However, both cannot be used at the same time.

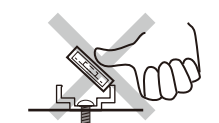
Fixed with screws
(commercially available)
(Screw hole 3.5mm dia.)



Mounting clip for Flat FLEX fail



Caution



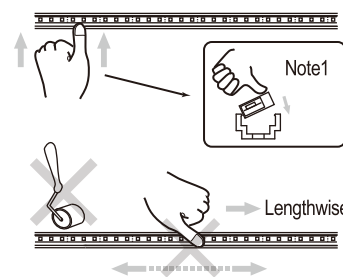
When inserting the lamp fitting into the rail, do not press with excessive force, and exercise caution not to damage the LEDs, electronic components, board, and other parts with your fingers or a tool. Risk of LED non-illumination, wire breakage and other failure.

Important points for rail mounting

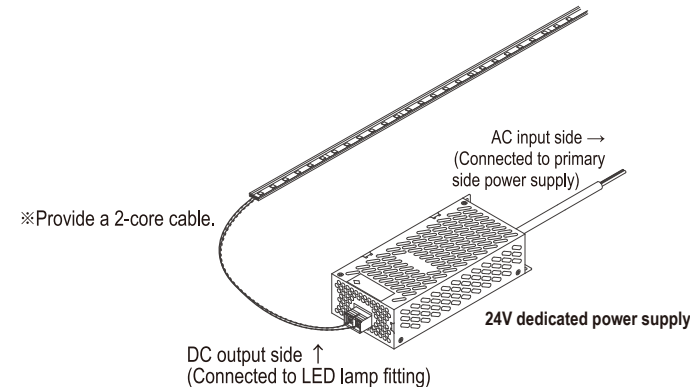
Do not push lengthwise into the rail

Caution! If tension is applied for an extended period in the horizontal direction, non-illumination due to circuit breakage and other damage to the lamp fitting may occur.

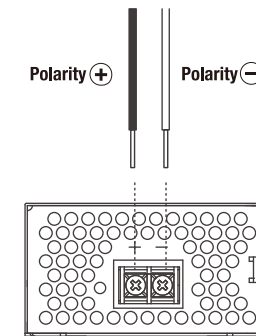
- If you are inserting a tube into the rail, insert the side that is least thick first. (Note1)
- Do not use a roller or other tool to insert by pressing and extending the tube lengthwise along the rail.
- When inserting the tube, press down perpendicular to the rail on the thickest side of the tube with your thumb.
- The tube is a soft material. Do not apply stress to the top surface on which the LEDs are attached.
- To remove the tube, insert your finger between the rail and tube and gently detach the tube.



Connecting to the power supply



Ex: 150W dedicated power supply connection section details



■ When wiring, make your selection by paying careful attention to the cable used at the input and output. When current flows in a long cable, the loss (heat generation) is generated by resistance, etc.

■ When the cable is bundled, heat dissipation becomes poor and the temperature becomes extremely high. When bundling 5 cables or more, connect by lowering the load factor (number of connected devices).