



# Luci Creide F

## Instruction Manual

**Luci Pte. Ltd. Singapore World HQ**  
52A Tanjong Pagar Road, Singapore 088473  
Tel: +65-6291-2410

**Luci CO., LTD. Tokyo Japan Regional HQ**  
Akasaka Bldg. 4F, 4-13-13, Akasaka, Minato-ku,  
Tokyo 107-0052, Japan  
Tel: +81-3-6327-7409 Fax: +81-3-6327-7410


### To ensure safe usage


The following is the safety cautions to prevent any harms or damages to others.  
If the product is used against cautions, it may cause damages • electrifications • smoke.


**Only supply power through the lead wire on one side using the dedicated connection cable for this product.**  
Supplying power through the lead wires on both sides may cause failure and fire. If using only one lamp fitting, insulate the unused lead with self-adhesive tape or vinyl tape.





Never supply power through the lead wires on both sides.  
When using only one lamp fitting, insulate the unused lead.

 Use a DC24 V power supply.  
Never connect to any other power supply.  
Always use a circuit breaker of suitable capacity in the power supply.  
If the capacity is not suitable, the breaker may not work when abnormal current occurs, creating risk of fire.


 Always shut off the main power supply before performing work or inspection.  
Do not connect or disconnect the lead wires of the lamp fitting while power is supplied.


 Firmly insert and connect the connectors.  
Incomplete connection may cause heating, smoke, and fire.


 Do not touch the ends of the connectors. Risk of electrical shock.


 The product must be allowed to dissipate heat.  
Allow sufficient space for ventilation (heat dissipation) between the lamp fitting and building structure.  
Avoid installing the light appliances close to each other. It may shorten product life or cause fire.





 When there is abnormal situations, please cut off the power immediately, consult with electricians, and do not touch the lighting with hands.

 Do not place a heatable object such as a cloth or paper or an insulating material on top of the lighting device or cover it with such a material. It may cause the device not to turn on or fire.  
Do not put a piece of metal or a flammable object in clearance of the lighting device.  
The outline of the lighting device main unit must not contact equipment in or out of the ceiling. It may cause fall, electric shock, or fire.  
Do not operate the device with wet hands. It may result in an electric shock.


 Do not use the product if the cover is damaged.  
Risk of an accident and electrical shock.

 If the product is dirty, wipe with a dry cloth.  
Do not use thinner, benzene, or other organic solvents to clean the product, and do not wash with water.

 Do not use a brush or an abrasive to polish metal parts.  
Risk of damage and corrosion.

 This lamp fitting is for indoor use only.  
Do not use in the following environments:

- Outdoors
- A location at high temperature (+35°C or higher) (usage environment temperature is 0°C to +35°C).
- A location where water may splash onto the product.
- A location with high humidity.
- A dusty location.
- A location with corrosive or inflammable gases.
- A highly airtight location.
- A location where the product is directly exposed to salt water or organic solvents.
- A location where the product is exposed to direct sunlight.
- A location subject to the effects of electric or magnetic fields.
- A location subject to intense vibration or shock, or a location subject to continuous vibration.

 Do not do the following to the lamp fitting:

- Forcibly remove the product after mounting it.
- Disassemble, modify, or add holes to the product.
- Forcibly pull or twist the product.
- Cut or damage the power cable. Use a damaged cable.
- Press down on the product.
- Drop the product or subject the product to intense vibration or shock.

### Please read before the usage

- Use the special mounting fixture to mount the lamp fitting to the mounting location, and verify that the mounting is secure.
- The product has been manufactured with the utmost care; however, please understand that slight deviations in LED color are unavoidable due to the characteristics of the product.

#### Caution regarding installation environment of power supply

Regarding the temperature, humidity, and other conditions of the operating environment, follow the instructions in the manual for the power supply.

### Maintenance and Inspection

- Lighting apparatus has a life span.
- Degradation occurs inside after 8-10 years of installation even when the apparatus looks fine from the outside. Parts of the lighting apparatus degrade due to heat when the light is on for a long time. This causes not only safety issues, but also reduces power efficiency and it is recommended to have regular maintenance and inspection.
- Cleaning and inspection should be performed at least once every 6 months.
- Inspection by a specialist, such as a product contractor, should be performed at least once every 3 years.
- If the apparatus is used for a long time without having an inspection, there is a small possibility that it could lead to fuming, igniting, electric shock and the like.

#### Inspection Methods

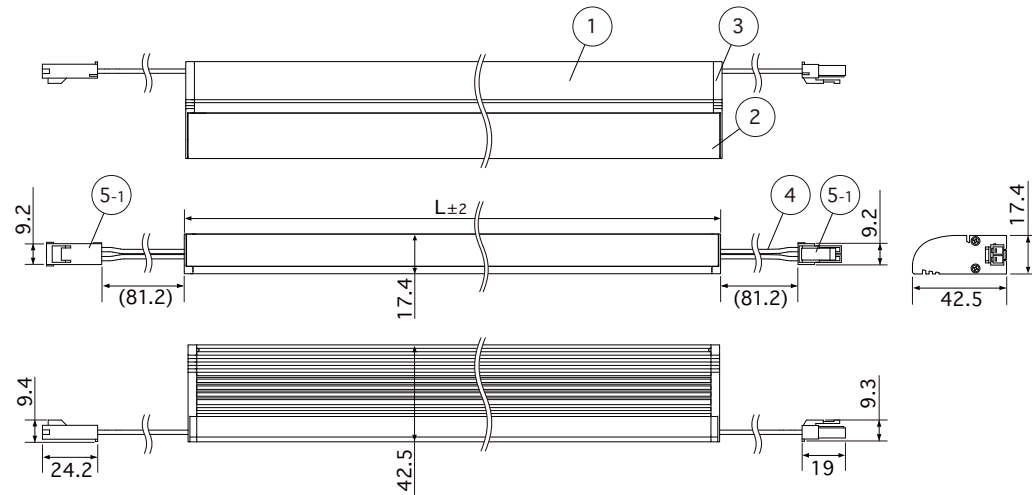
- Is LED operating normally?
- Is there any unusual smell, sound or heat?
- Are there any cracks, splits, or detached parts on any parts or joints?

#### Cleaning Method

- Lightly wipe the lighting apparatus with a soft cloth.
- To best clean the apparatus, wipe dirt with a soft cloth which has been soaked in a neutral detergent diluted with water and wrung firmly. To finish off, wipe it with a damp cloth and dry it.

## Product specifications

※unit of measure=mm



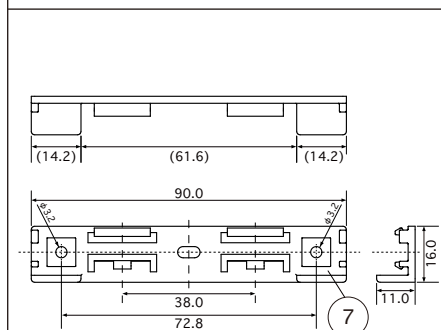
Input voltage

DC24V

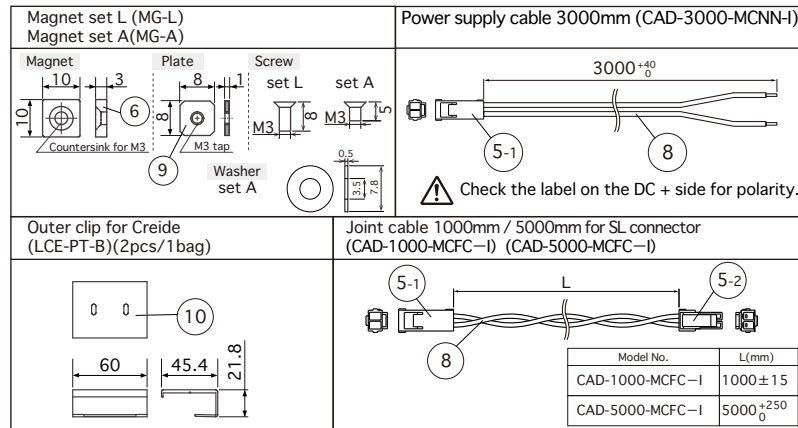
#	Item	Name Materials etc.
①	Body	Aluminum, White
②	Body cover	Polycarbonate, Diffuser
③	Side cover	Polycarbonate, Diffuser
④	Lead Wire	UL1007 AWG20
⑤	Connector	SLR-02VF, SLP-02V(JST)
⑥	Magnet	Neodymium magnet
⑦	Mounting Clip	Polycarbonate, Clear
⑧	Lead Wire	UL1007 AWG20
⑨	Magnet attachment plate	Stainless steel, Silver
⑩	Outer Clip	Polycarbonate, Clear

### Accessories - Option parts

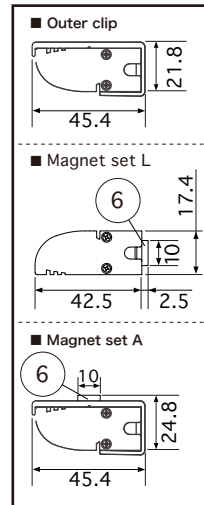
Mounting clip for Creide (LCE-PTA) (2pcs/1 bag)



### Option parts



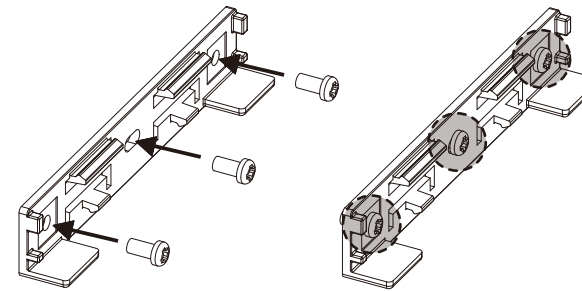
### Installation Dimensions



Item / Product Name	Luci Creide F					
Model No.	LCEF-0150-※-DF-I	LCEF-0300-※-DF-I	LCEF-0510-※-DF-I	LCEF-0880-※-DF-I	LCEF-1170-※-DF-I	LCEF-1460-※-DF-I
Power consumption	3W	6W	10.6W	18.1W	24.2W	30.2W
Current consumption	0.125A	0.25A	0.442A	0.754A	1.008A	1.258A
Lamp fitting length (L)	150mm	300mm	510mm	879mm	1169mm	1458mm
Number of LEDs	12	24	42	72	96	120
Weight	70g	133g	218g	365g	485g	620g
Environment	Indoors (No Condensation)					
Operating temperature	0℃～+35℃ (No Condensation)					
Max. sets connectable	5m					
Material (Body)	Polycarbonate, Aluminum					
Accessories	Mounting Clip (1pcs)	Mounting Clip (2pcs)		Mounting Clip (3pcs)		Mounting Clip (4pcs)
Option parts	Mounting Clip (2pcs/ 1bag), Joint cable 1000mm/5000mm , Power supply cable 3000mm, Outer clip, Magnet set L, Magnet set A					
Dimmable	○					
Power Supplies	○					
Light source color (※)	White(W), Warm white 3500K(WW), Warm white 3000K(L30), Warm white 2700K(L27), Warm white 2400K(L24)					

## Installing the product

### A Standard installation method

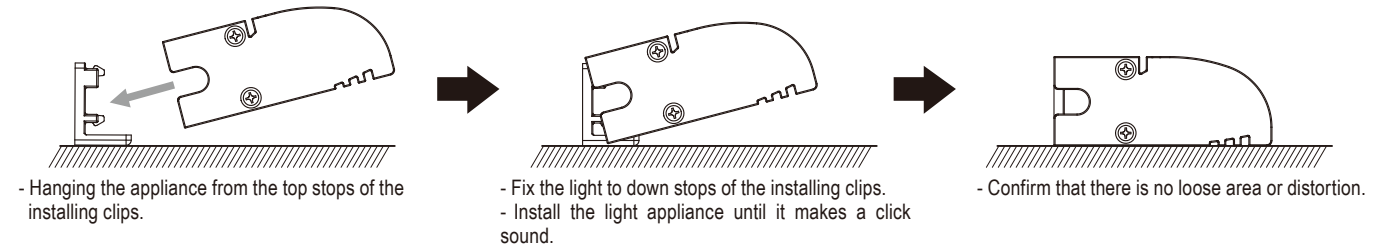


Installing clips should be set to the installation spot with shop-bought screws (pan head screws M3). (Recommended pitch under 380 mm, at least 3 per meter)

- Please fix tightly using 3 pins per an installing clip.
- Install a light appliance until it makes a click sound.
- Confirm that there is no loose area or distortion.
- When you remove it, please watch out not to damage the clips.

### ⚠ Cautions

**Do not repeatedly attach and detach to the mounting-clip.**  
(Reference number of attachments and detachments: maximum 5)  
**The clip tab may be damaged.**



- Hanging the appliance from the top stops of the installing clips.

- Fix the light to down stops of the installing clips.  
- Install the light appliance until it makes a click sound.

- Confirm that there is no loose area or distortion.

### ⚠ Cautions

- 1) When install the mounting clips, ensure that those are installed in the same level on a plane surface and alined on the centre line.
- 2) When install the LED fixture on the mounting clip, ensure to insert onto the clip tab and check if it is completely attached.

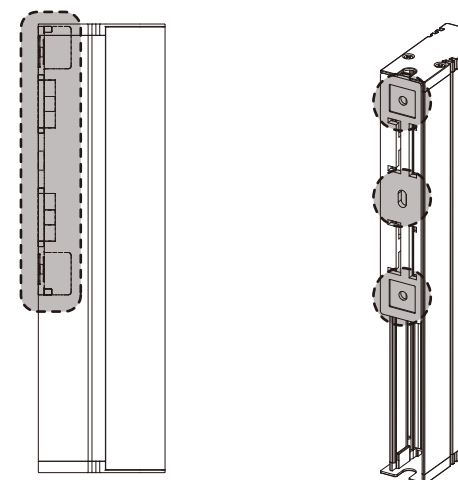
Otherwise, caused by that distortion and incomplete attachment, the LED fixture might have unexpected crack sound and fall down from the clips.

### B How to install lengthwise

\* For installation in lengthwise direction, the light appliance and clip should be placed in accordance with the diagram below.

- Please make sure to fix tightly using 3 screws per an installing clip.

If using only 1 or 2 screws, the fixing and holding force is not enough and may cause the appliances to fall.

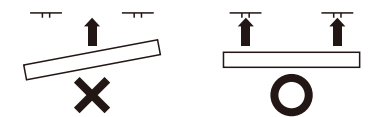


- Please make sure to hold the light appliance (side cap) with the projection portions of the installing clips.

(If the weight of the light appliance is not supported by the projection, it may fall and cause a hazard)

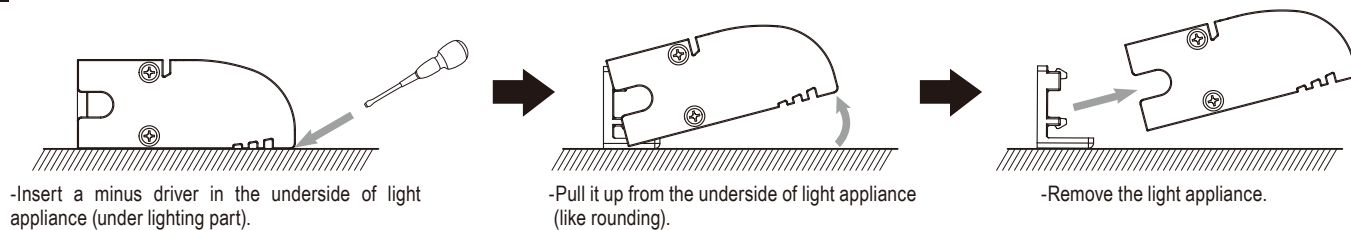
### ⚠ Cautions

When installing the light appliance to the installation spot, ensure that it is kept level and insert onto the clip tabs. Check if it is completely attached.



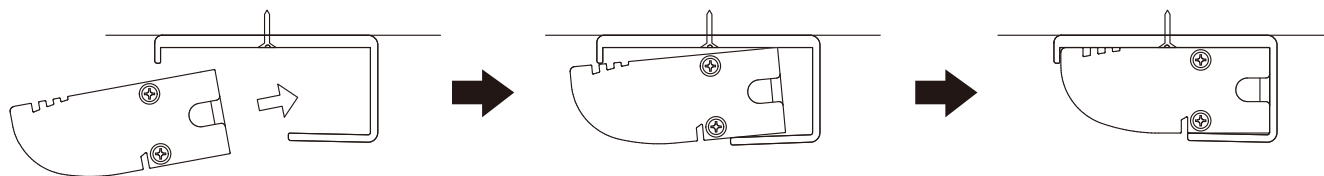
## Installing the product

### C How to remove

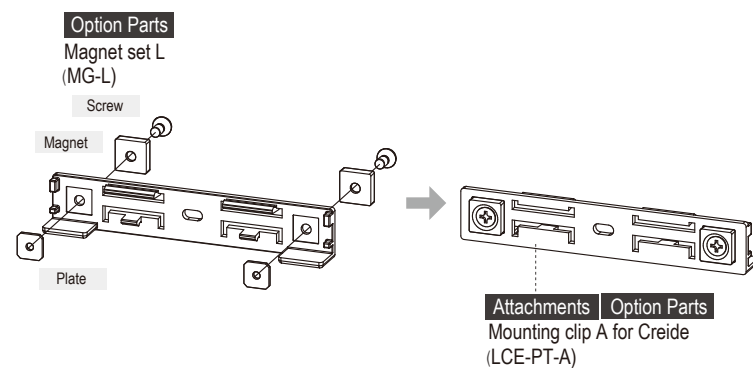


### D Outer clip installation

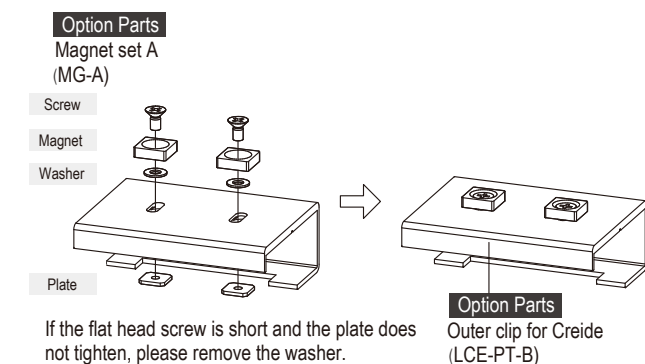
The Outerclip should be preset on the installation spot with screws supplied by installer. (Flat head screws M3 recommended.) Tilt and insert the LED fixture into the Outerclip. Make sure the LED fixture fit in the Outerclip.



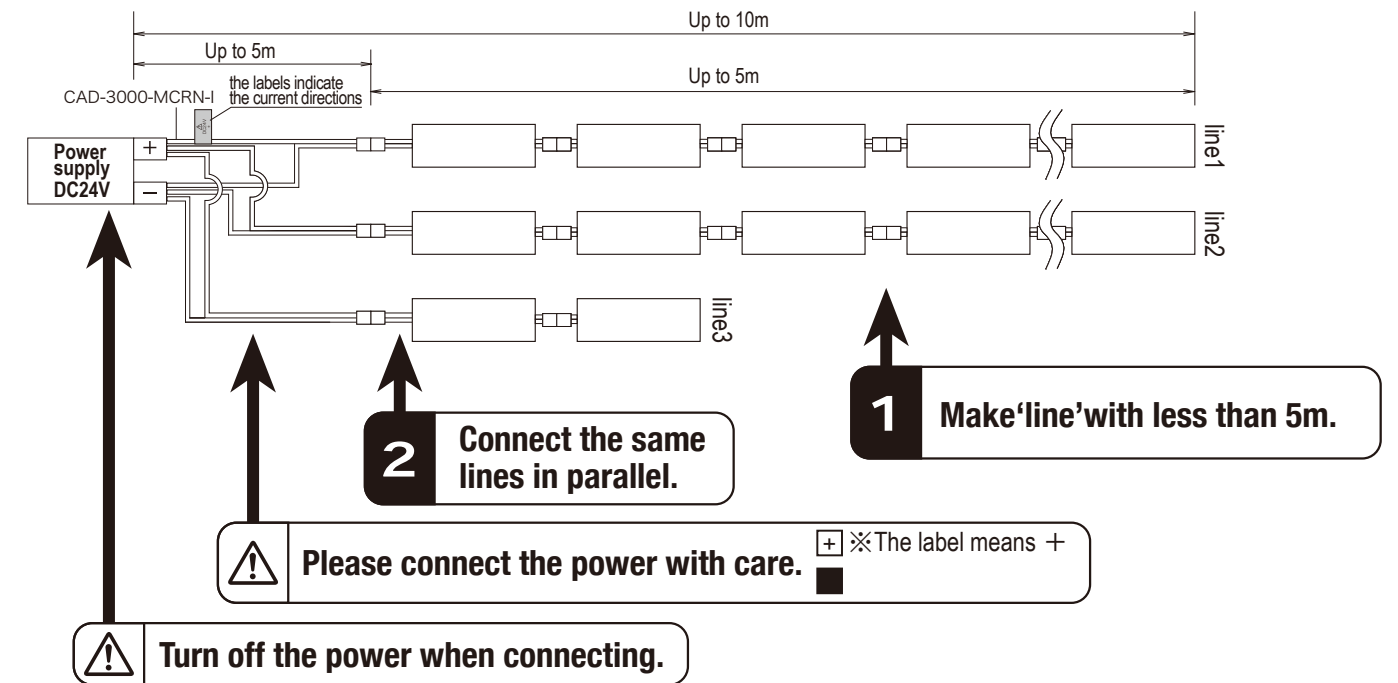
### E Magnet installation for Mounting clip A



### F Magnet installation for Outer clip



## Connecting lamp fittings



## ⚠️ Cautions

The number of lamp fittings that can be connected to the power supply depends on the output (W) of the power supply. For Luci Creide F, the **maximum number connectable in series is 5 m**. If more than the maximum number must be connected, connect in separate systems. **Lamp fitting lengths (150, 300, 510, 880, 1170, 1460) can be combined freely; however, the maximum number of meters connectable in series (5 m) must be strictly observed.** Small noise may be emitted from the appliance and the dimmer while using the dimmer, but it is normal. Load capacity of 60% is recommended to reduce noise.(normal operation: 70%),or to connected with multiple systems.

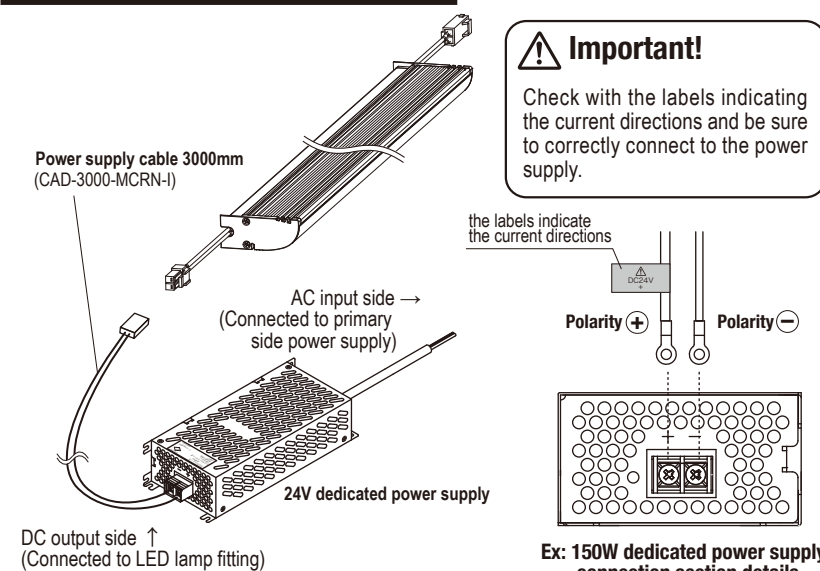
Power supply	Total connectable length	
	Normal operation	During dimmer use
50W	1.6m	1.2m
100W	3.5m	2.5m
150W	5.3m *	5 m *

\* = for multiple systems

## Connecting to the power supply

**Caution: Installation environment of power supply**

**Follow the instructions in the manual for the power supply regarding the temperature, humidity, and other operating environment conditions.**



■ Cables used for connecting LED fixtures and Power supply must be a suitable type and gauge.

■ Cables should be joined with suitable terminal block or methods as appropriate to the installation and operating environment.

Caution: When using a long cable with thin dimension, the resistance of cable will increase. Voltage drop and heat dispatching may occur and result in brightness decreasing.

Caution: When separating one cable to multiple circuits in the same gauge, the current loading focuses on the junction of the branch circuit and high temperature will liberate on there. Please consider the loading of the power supply (quantity of LED fixture) and review the wiring system to avoid the above problem.

■ When connecting the dimmer driver with power supply, unpredicted noise might occur. It is a characteristic of electronic devices, not a malfunction of the LED fixture. Please choose an appropriate power supply and consider a place to install. Reducing the loading factor of LED fixture might improve the noise from the power supply while the noise for the LED fixtures might be improved by splitting the circuit of LED fixtures into multiple.